

Passenger Operations Baggage Shelters

Project Description

The Alaska Railroad Corporation (ARRC) will replace the Seward Passenger Depot's existing, non-permanent baggage structure with a larger, more durable baggage shelter located on the north side of the depot. Depot facilities are entirely within ARRC's right-of-way, and located near the intersection of the Seward Highway and Port Avenue in Seward, Alaska.

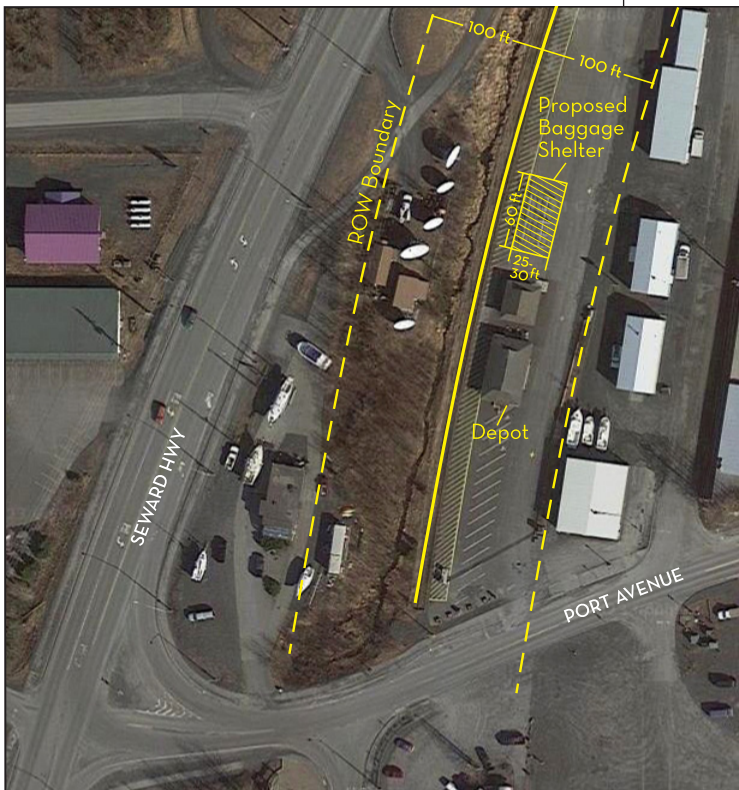
The project will also replace the aging cover to the non-permanent baggage shelter in Anchorage. The shelter is on the east side of the depot on First Avenue, near the intersection with North C Street.

Project Scope

In Seward, the existing baggage shelter is comprised of two smaller structures pushed together with little area to efficiently perform baggage operations. ARRC plans to dismantle and move the existing shelter.

The new Seward Depot baggage shelter would be similar to the one at the Anchorage Historic Depot. It is a pre-fabricated non-permanent shelter outfitted with a durable tensioned fabric membrane resistant to rot, decay and exposure to outdoor elements. The replacement shelter will measure 25-30 feet wide by 60 feet long. The anchoring system will be comprised of pre-cast concrete tie down blocks as well as arch lag fasteners, and anchor plates bolted into the asphalt surface.

In Anchorage, the replacement cover for the Anchorage Baggage Shelter will be approximately 30 feet wide by 70 feet long. The cover will be made from material (and color) similar to the existing shelter material.



Proposed baggage shelter replacement site plan in Seward.



The existing Seward Depot baggage shelter.

Purpose and Need

Passengers transiting in and out of Seward on the Alaska Railroad need suitable space to store luggage during train loading and unloading operations. This is especially important for outdoor activities in coastal community climates that routinely experience harsh inclement weather. The existing baggage shelter does not have sufficient capacity, nor is it fortified to withstand the wet, windy and frigid weather conditions at this location. Benefits of a new structure include:

- A durable replacement structure is designed to withstand frequent inclement weather conditions.
- A larger facility will provide space to operate a more efficient and productive baggage operation.
- More space will maximize the safety of passengers and depot staff who perform baggage operations.

Replacing the worn Anchorage Historic Depot baggage shelter cover maintains the same benefits for rail travelers transiting in and out of Anchorage.

Status

- Environmental review required by NEPA is underway and will be submitted to the Federal Transit Administration (FTA).
- Pending NEPA review and funding approval from FTA, ARRC will procure a non-permanent structure and a new structure cover during spring 2023.
- Structure installation in Seward is expected during summer or fall 2023, with completion by winter 2023-2024.
- Cover replacement in Anchorage is expected in fall 2023.

Cost and Funding

The project cost estimate is \$100,000 to \$250,000, depending on final design. Funding is anticipated to be from the Coronavirus Aid, Relief and Economic Security (CARES) Act, which does not require a matching cash contribution.

More Information

For more project information, email the Alaska Railroad at Public.Comment@akrr.com.



The project calls for a baggage shelter in Seward to be similar to the Anchorage Historic Depot's structure (pictured).



Concrete tie-down blocks anchor the Anchorage depot baggage shelter.



The Anchorage Historic Depot's structure is fortified with a sturdy frame. The depot's baggage shelter cover is reaching the end of its useful life and must be replaced.