

Bridge 422.9 Replacement

Project Description

The Alaska Railroad Corporation (ARRC) will replace the single-span 62-foot thru-girder bridge that crosses Little Goldstream Creek at ARRC milepost 422.9 (about 10 miles north of Nenana). The project will replace the aging structure with a new 75-foot single-span deck-plate girder bridge.

Purpose and Need

This effort will help ensure railroad infrastructure remains in a state of good repair. The integrity of bridge infrastructure ensures the safety and reliability of rail operations to meet business demands. General bridge rehabilitation benefits are outlined in the current *Bridge Program* fact sheet.

Status

- Preliminary project studies, environmental reviews, design and permitting began in 2020.
- The project team prepared Categorical Exclusion (CE) environmental review documentation to meet National Environmental Policy Act (NEPA) requirements. The CE has been submitted to the Federal Railroad Administration (FRA) for review. FRA has requested additional cultural studies.

- Project construction contract expected to be bid during fourth quarter 2023, with selection shortly thereafter.
- Project construction is scheduled to begin during second quarter 2024, and continue through first quarter 2025.
- Project completion is estimated to be by the end of 2025.

Cost and Funding

The project is estimated to cost \$6.29 million. Funding is expected from an FRA Consolidated Rail Infrastructure and Safety Improvements (CRISI) grant. The FRA CRISI grant requires a 50% match from the Alaska Railroad, which is reflected in the estimated \$6.29 million noted above.

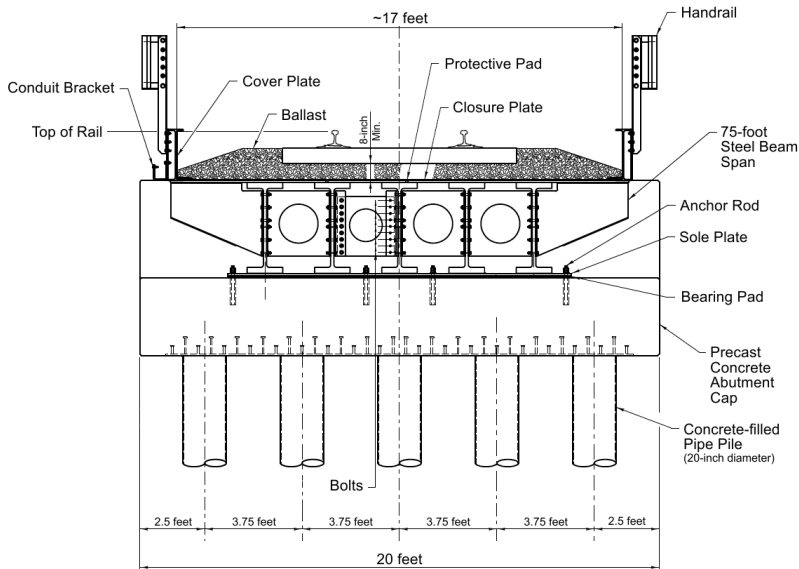
More Information

For more project information, email the Alaska Railroad at Public_Comment@akrr.com. The *ARRC Bridge Program fact sheet* is available at AlaskaRailroad.com > Corporate > Projects (look under *Systemwide Projects*).

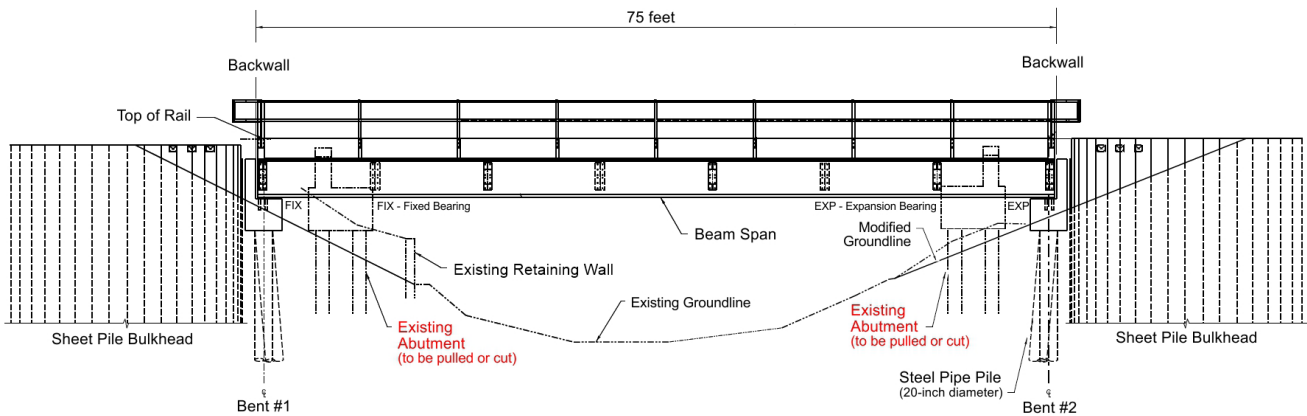


Bridge 422.9 crosses over Little Goldstream Creek, about 10 miles north of Nenana.

Project Area - Bridge MP422.9, Cross-Section



Project Area - Bridge MP 422.9, Side View



Project Area - Bridge MP 422.9, Top View

