

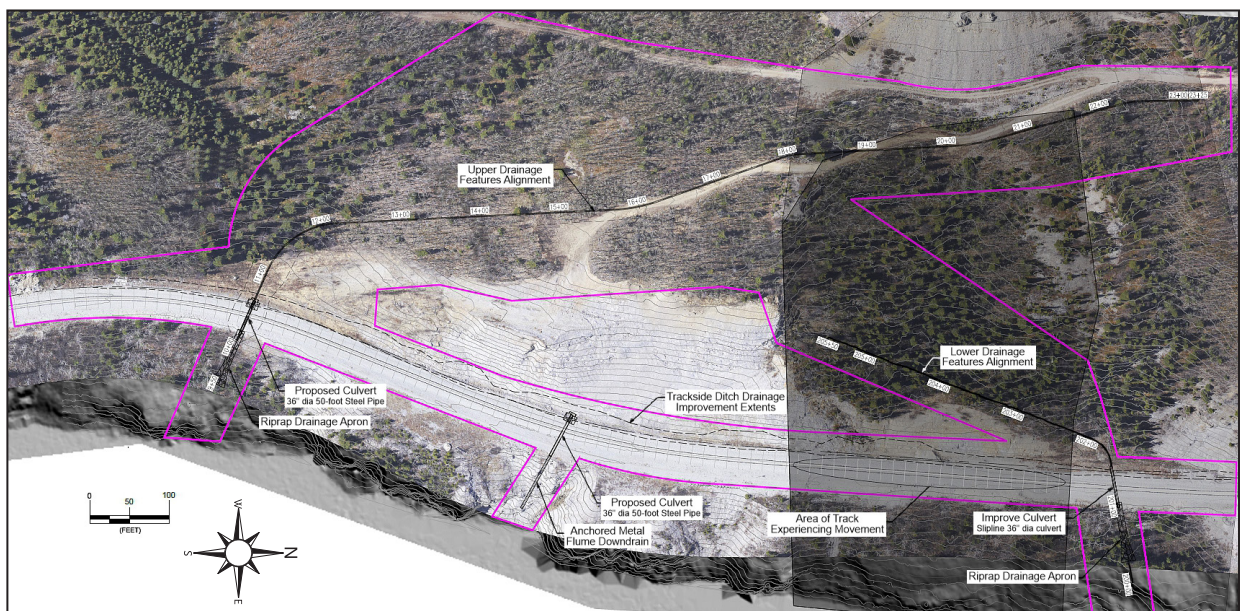
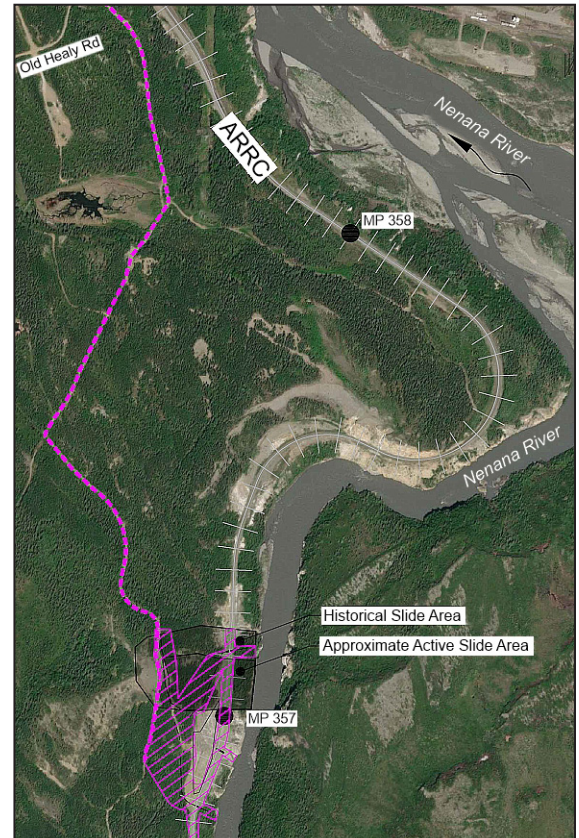
MP 357.1 Drainage Improvement

Project Description

The Alaska Railroad Corporation (ARRC) will construct drainage improvements in and around ARRC Milepost 357.1 to stabilize slopes above and below the tracks. The area lies within Healy Canyon, an erosion-prone area between the Denali National Park entrance (MP 348) and Healy (MP 361), where the tracks follow the Nenana River. The project will ease environmental forces by channeling water away from active slide areas.

Purpose and Need

The area in and around MP 357.1 has been susceptible to rapid slope movements and subsequent track movements. As a result, this segment of track has fallen out of acceptable class operating limits with little notice (less than 12 hours). Water from precipitation essentially lubricates the slope's slip plane, causing this rapid change in track condition. Redirecting the water eliminates the lubrication action and reduces driving forces in order to regain slope stability.



MP 357.1 drainage improvement plans include new culverts on the lower slope and fortified ditches on the upper slope.

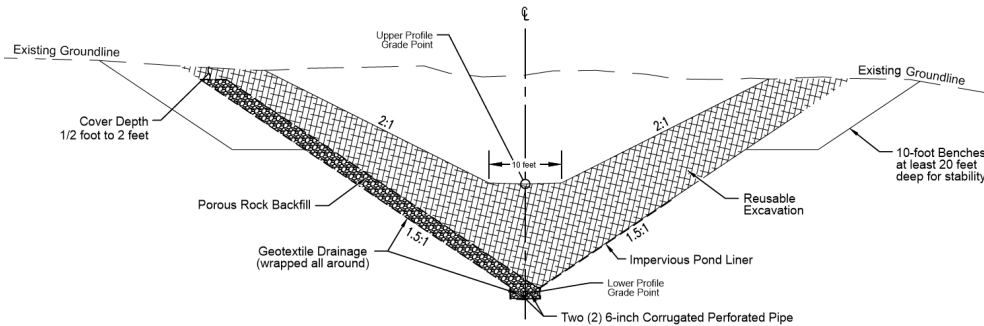
The purpose and need was clarified in 2021, when ARRC commissioned an assessment and inventory of locations with stability and erosion problems in Healy Canyon. ARRC also sought recommendations to prioritize projects to address these locations. The area at MP 357.1 was identified as needing additional study and engineering, and was prioritized for a more durable solution. The *Healy Canyon Report*, released in May 2022, is available online (AlaskaRailroad.com > CORPORATE > Projects > Studies).

Status

- Preliminary project studies, environmental reviews, design and permitting began in 2021.

- The project is 30% designed.
- Permitting and environmental documentation required by the National Environmental Policy Act (NEPA) will be completed in 2023 and submitted to the Federal Transit Administration (FTA) for review.
- Project construction will be bid in summer 2024, with a contractor selected shortly thereafter.
- Construction is estimated to begin in the third quarter of 2024 and continuing into third quarter of 2025.
- Project completion is anticipated by the end of 2025.

Example of Upper Slope Fortified Drainage Ditch



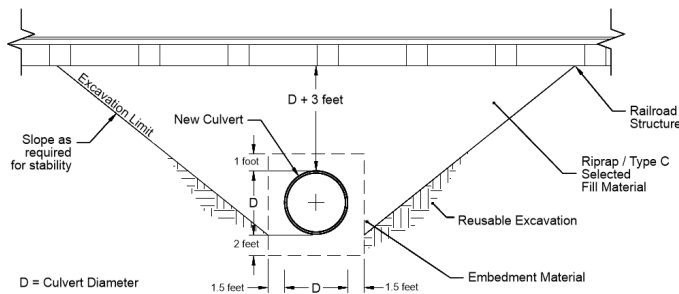
Cost and Funding

The project is estimated to cost \$2.5 million. Funding comes from an FTA grant. The Alaska Railroad will provide the required 20% matching contribution.

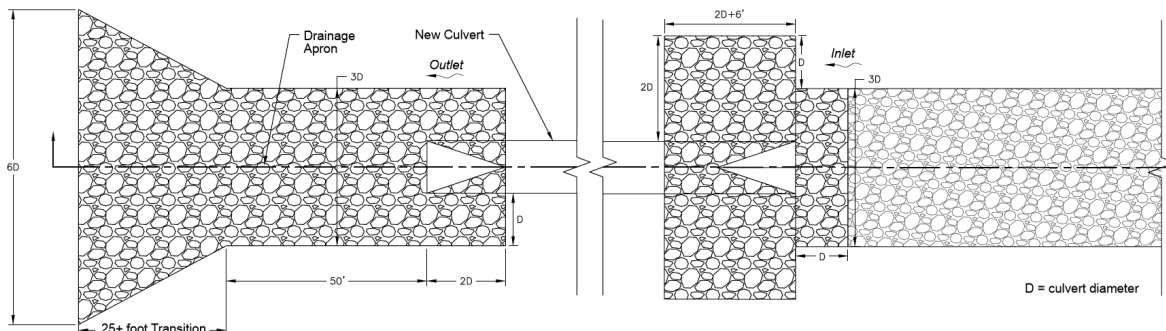
More Information

For more project information, email the Alaska Railroad at Public_Comment@akrr.com. The ARRC *Bridge Program* fact sheet is available online at AlaskaRailroad.com > Corporate > Projects (look under *Systemwide Projects*).

Example of Lower Slope Culvert Design



Cross-section View of Lower Slope Culvert Design



Top View of Lower Slope Culvert Design