

# Bridge 190.5 Replacement

## Project Description

The Alaska Railroad Corporation (ARRC) will replace the single-span 80-foot bridge that crosses Little Willow Creek at ARRC milepost 190.5, just north of Willow, Alaska. The project will replace the aging structure with a new 125-foot single-span thru-plate girder bridge.

## Purpose and Need

Bridge replacement will help ensure railroad infrastructure remains in a state of good repair. The integrity of critical rail corridor infrastructure ensures the safety and reliability of passenger and freight train operations to meet rail business demands. General bridge rehabilitation benefits are outlined in the current Bridge Program fact sheet.

## Status

- Preliminary engineering, studies, environmental reviews and permitting began in 2020.
- Environmental documentation and permitting were completed in 2021.

- Tentatively, the construction contract will be bid during the first quarter of 2025, with a contractor selected shortly thereafter.
- Construction is tentatively scheduled to begin during the fourth quarter of 2025 and may continue into the third quarter of 2026.
- Project completion is estimated by the fourth quarter of 2026.

## Cost and Funding

The project budget is approximately \$10.3 million. Funding is planned 80% by the Federal Railroad Administration (FRA) and 20% matching funds by ARRC. The 80% FRA funds are available from FY 2023 Federal-State Partnership for Intercity Passenger Rail Grant.

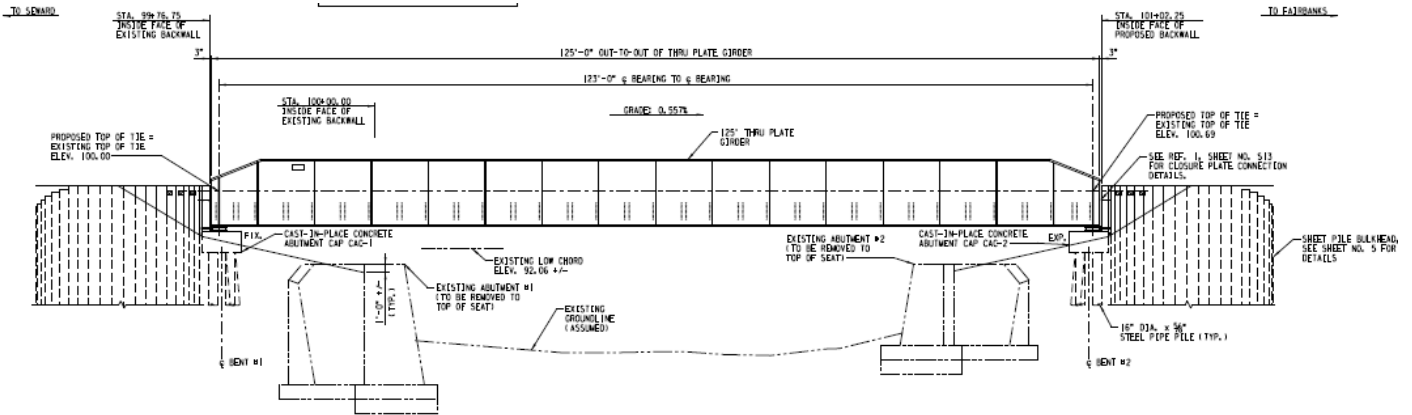
## More Information

For more project information, email the Alaska Railroad at [Public\\_Comment@akrr.com](mailto:Public_Comment@akrr.com). The ARRC Bridge Program fact sheet is available online at [AlaskaRailroad.com](http://AlaskaRailroad.com) > Corporate > Projects (look under *Systemwide Projects*).

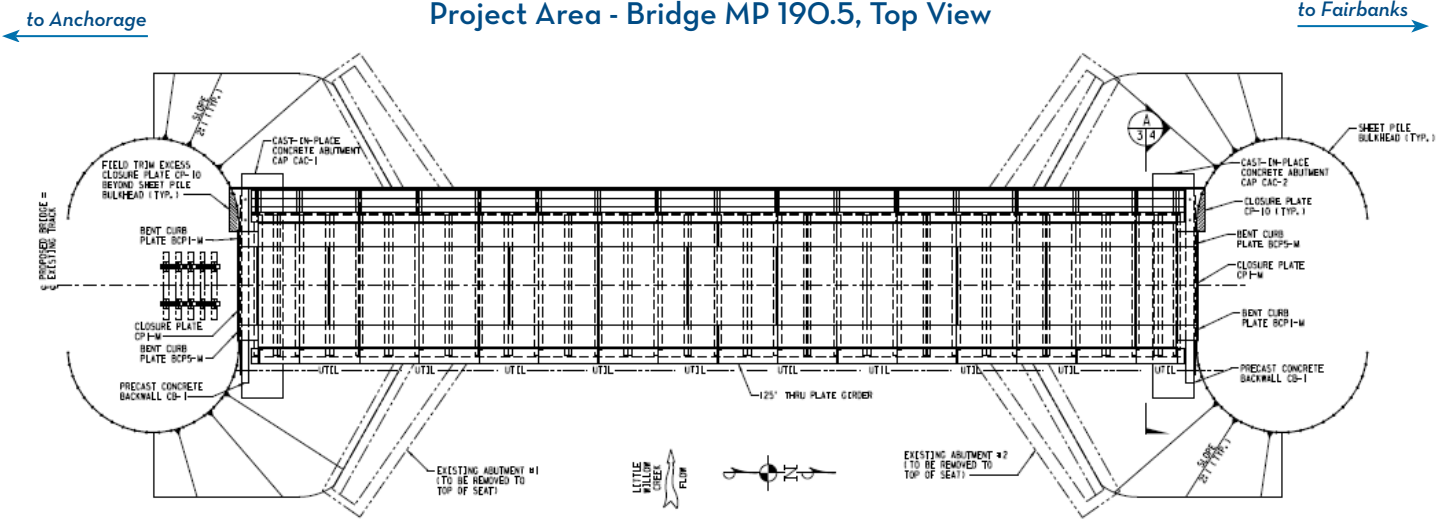


Bridge 190.5 crosses Little Willow Creek just north of Willow.

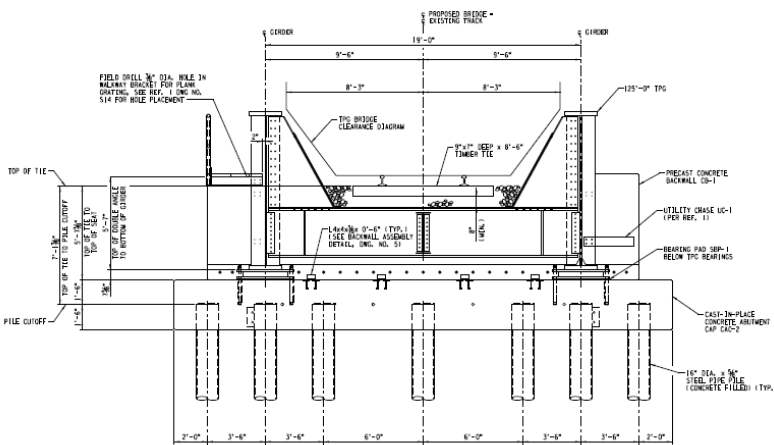
## Project Area - Bridge MP 190.5, Side View



## Project Area - Bridge MP 190.5, Top View



## Project Area - Bridge MP 190.5, Abutment Cross Section



Left: a project drawing shows greater detail on replacing the abutments. Project work will include full replacement of the existing bridge.

Right: the photo focuses on the south-end abutment, on the east side of the bridge.