

Bridge 354 Replacement

Project Description

The Alaska Railroad Corporation (ARRC) will replace the 123-foot through-plate girder bridge and four 31-foot I-beam ballast deck spans that cross Bison Gulch above the banks of the Nenana River, just south of Healy, at ARRC milepost 354. The project will replace the aging structure with a new 125-foot steel through-plate girder bridge, three 31-foot, and one 46-foot deck plate girder spans.

Purpose and Need

The existing bridge and spans are nearing the end of their useful lives and replacement will help ensure railroad infrastructure remains in a state of good repair. The integrity of bridge infrastructure ensures the safety and reliability of rail operations

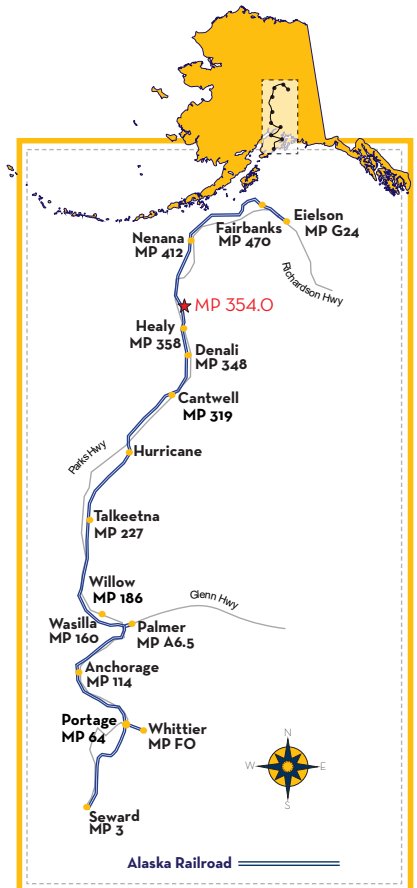
to meet business demands. General bridge program benefits are outlined in the Bridge Program fact sheet available at AlaskaRailroad.com.

Status

- Preliminary project studies, environmental reviews, and design began in 2020.
- Project design will be completed in 2024.
- Pending National Environmental Policy Act (NEPA) and funding approval by the Federal Transit Administration (FTA), project construction will be bid and a contractor selected in 2025.
- Construction is estimated to begin in 2025 and continue into 2026.
- Completion is estimated by the end of 2026.



Bridge 354 crosses Bison Gulch along the banks of the Nenana River.



Cost and Funding

The project cost is estimated to be \$15 million. Funding is planned 80% by Federal Transit Administration funds with a required 20% match from ARRC.

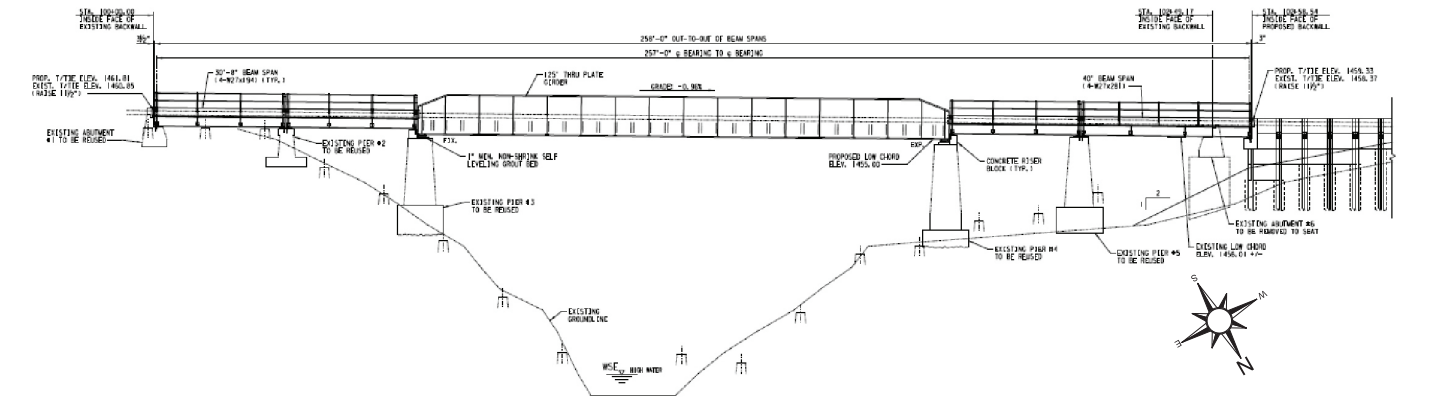
More Information

For more project information, email the Alaska Railroad at Public_Comment@akrr.com. The ARRC Bridge Program fact sheet is available online at AlaskaRailroad.com > Corporate > Projects (look under Systemwide Projects).



Existing piers will be reused to support the new bridge.

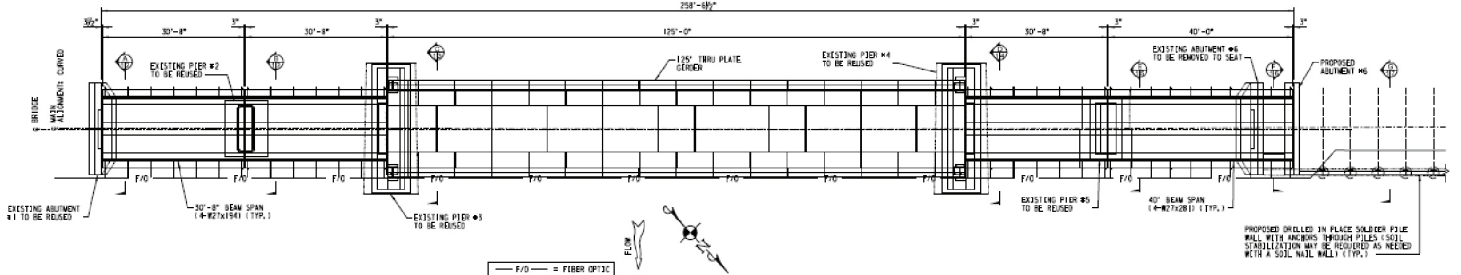
Project Area - Bridge MP 354 Side View



to Anchorage

Project Area - Bridge MP 354 Top View

to Fairbanks



A panoramic view of Bridge 354 shows the surrounding steep banks of the Nenana River.