
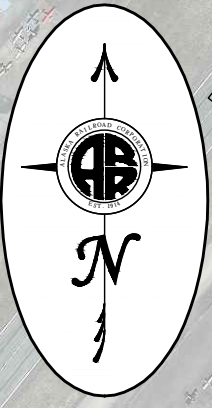
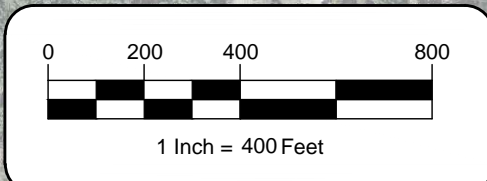
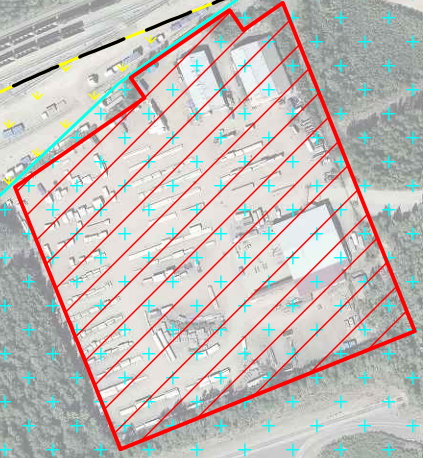


-  Existing Lease
-  Operation Land
-  Useable Land
-  Reserve Boundary
-  ROW within Reserve
-  ROW outside of Reserve



Birchwood Airport



| Area Table        |                  |
|-------------------|------------------|
| Operation Land    | } = 61 ac±       |
| ROW Land          |                  |
| Non-Useable Land  | = 0 ac±          |
| Useable Land      | = 160 ac±        |
| <b>Total Land</b> | <b>= 221 ac±</b> |

 **ALASKA RAILROAD CORPORATION**  
 REAL ESTATE DEPARTMENT, LAND SERVICES  
 P.O. BOX 107500, ANCHORAGE, ALASKA 99510-7500

### Birchwood Reserve Overview

|              |     |                          |           |       |            |
|--------------|-----|--------------------------|-----------|-------|------------|
| DRAWN BY:    | AMB | SCALE:                   | 1" = 400' | DATE: | 2021-07-29 |
| CHECKED BY:  | AMB | <b>Birchwood Reserve</b> |           |       |            |
| APPROVED BY: | AMB |                          |           |       |            |

R:\00 RED\Res\BIR\BirchwoodReserveUpdate.dwg