

American Recovery and Reinvestment Act of 2009 Alaska Railroad Implementation Plan



AlaskaRailroad.com



Economic Stimulus Project List

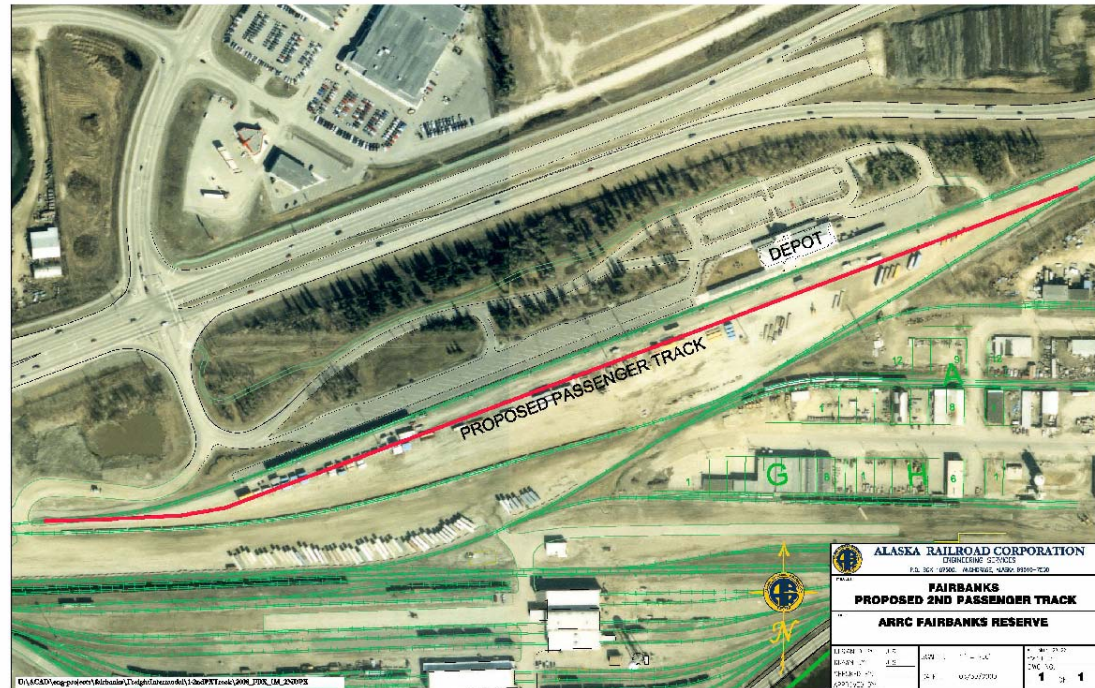
Project Name	Brief Description	Amount
Fairbanks Intermodal Passenger Track Upgrade	Install second track at intermodal depot	\$1,200,000
Seward and Talkeetna Restroom Facilities	Provide additional depot restroom facilities. Supports Transit Enhancement expenditures	\$1,000,000
Anchorage Ship Creek Intermodal Facility	Initiate Phase II of Anchorage Ship Creek Intermodal facility improvements including design, exterior upgrades, mechanical and electrical upgrades	\$7,425,000
Seward Depot Electrical Upgrade	Reduce train idle in downtown Seward by providing alternate electrical power.	\$250,000
Automated Passenger Equipment Safety Devices	Wheel impact load detectors (WILD)	\$1,000,000
Collision Avoidance System	Phase 4 includes monitoring wayside detection devices for track integrity, switch position, load, avalanche and hot wheels. ARRA-09 money will fund monitoring of seven of the 142 wayside locations required by the Rail Safety Improvement Act.	2,500,000
Track Rehabilitation Program	Purchase 2010 rail and ties, weld rail, and install	\$11,800,268
Ship Creek Intermodal Fencing	Supports Transit Security and Transit Enhancement expenditures	\$300,000
Nenana Rail Realignment	Hydrology and final engineering in support of a major rail realignment	\$350,000
TOTAL ALASKA RAILROAD QUALIFYING PROJECTS		\$25,825,268



Fairbanks Intermodal Track Upgrade, Fairbanks Depot

Passenger-related
Fairbanks yard
project:

- Construct second depot track



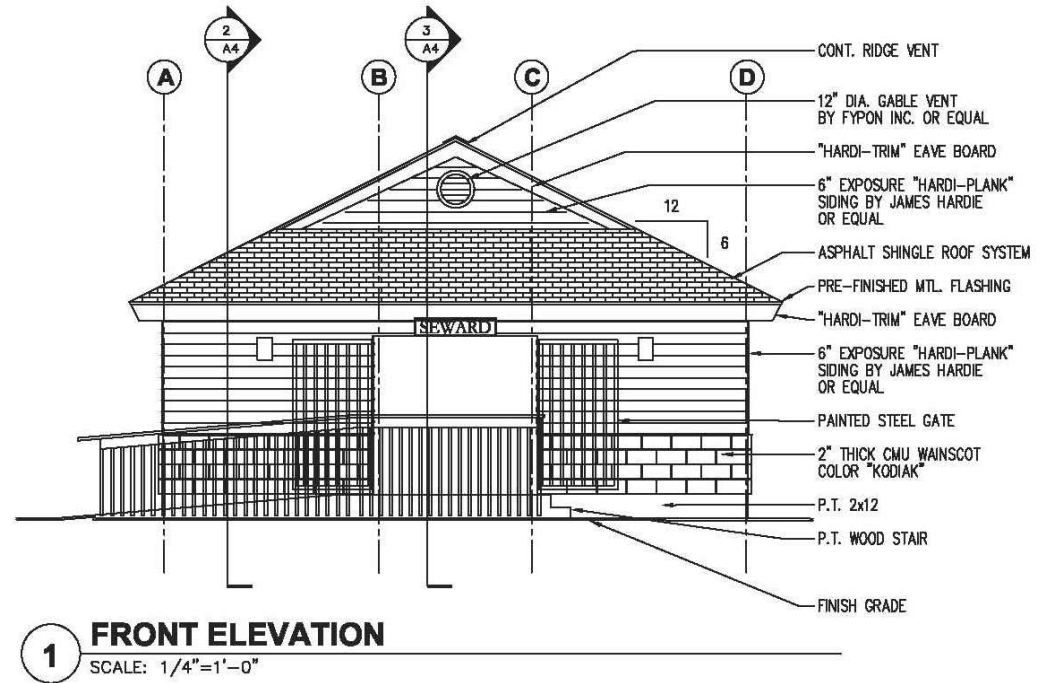
\$1,200,000



Seward and Talkeetna Depots

- Construct an ADA-compliant restroom facility at the Seward and Talkeetna depots
- Currently, each depot only has two stalls supplemented by port-a-potties

\$1,000,000



Ship Creek Intermodal Facility

- Project will undertake a portion of the Ship Creek Intermodal Transportation Center project, to include previously-designed Phase II work on historic depot.
 - exterior upgrades (paint, windows, etc)
 - relocation of current roof-top and wall mounted mechanical equipment
 - removal of an underground storage tank
 - replacement of boilers
 - correction of code deficiencies in the electrical system

\$7,425,000



Seward Depot Electrical Upgrades

- Project provides commercial power to trains at depot
- Power necessary to accommodate food and beverage service on board
- Allows locomotive shutdown during layover, saving fuel and eliminating complaints from idling



\$250,000

Automated Passenger Equipment Safety Devices

- Project will:
 - Install a wheel impact load detector (WILD) near MP115.4, on the eastern side of the Anchorage Rail Yard

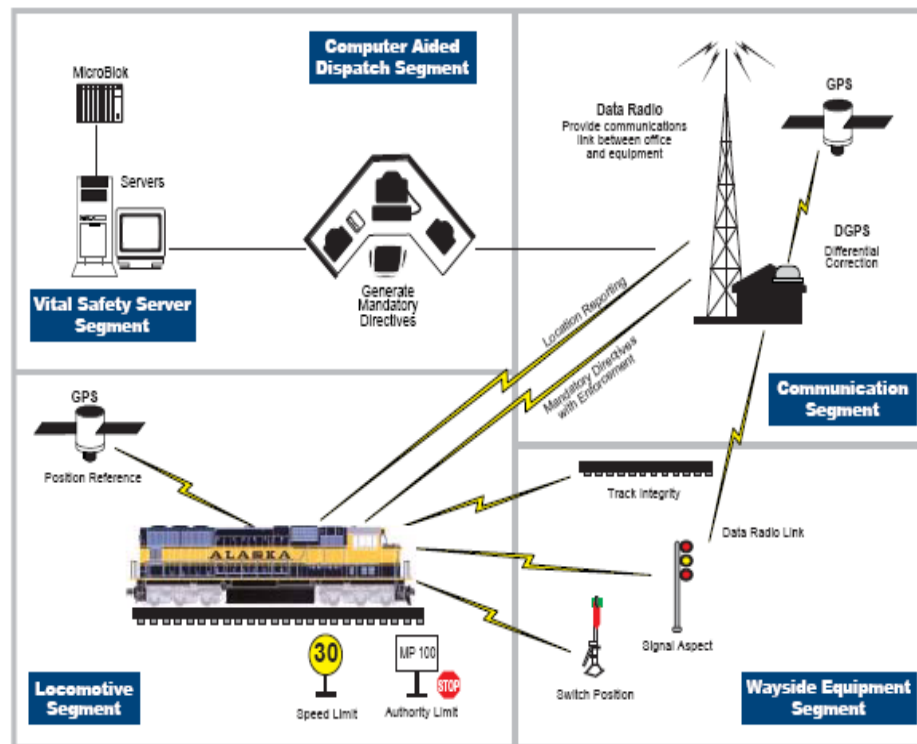
\$1,000,000



The WILD device strain gauge and cables are installed along the rail, with cable conduit leading to track-side junction boxes and system electronics.

Collision Avoidance System

- The ARRC is implementing a positive train control system to include Computer Aided Dispatch (CAD), a locomotive on-board computer system, data radio and GPS locator technology to minimize human error.
- Radio, GPS and CAD components are installed.
- Locomotive onboard control and validation systems are being tested.
- Phase 4 includes monitoring wayside detection devices for track integrity, switch position, load, avalanche and hot wheels.
- ARRA-09 money will fund monitoring of seven of the 142 wayside locations required by the Rail Safety Improvement Act.



\$2,500,000

Transit Enhancement/Security

- This funds additional fencing at Ship Creek Intermodal requested by both Facilities and Security
- Fence will extend 990 feet from the Plaza to Cordova Street

\$300,000



Track Rehabilitation Program

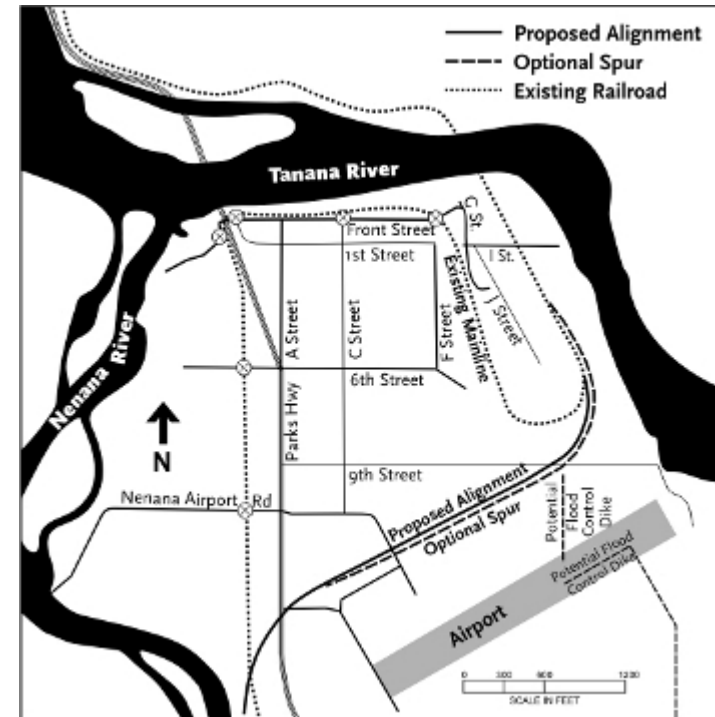
- Purchase approximately 200,000 linear feet of 115# rail and 50,000 ties
- Weld rail this winter (2009/2010) and install as part of the 2010 program

\$11,800,000



Nenana Hydrology Final Engineering

- Part of ARRC Nenana Rail Realignment Project.
- Engineering will identify the flooding impacts of the project, if any.
- Required before final engineering and construction on the overall project can proceed.



\$350,000