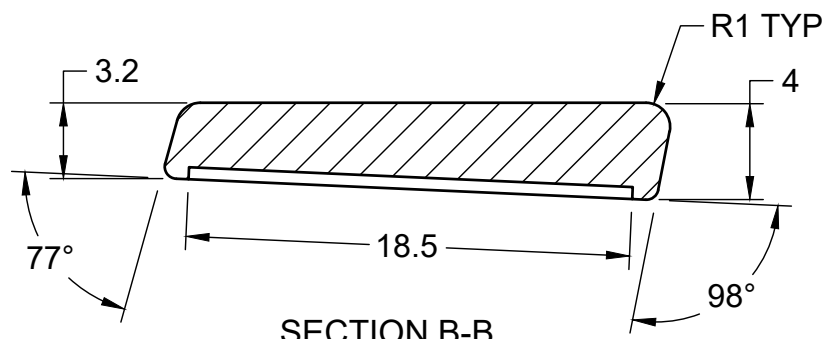
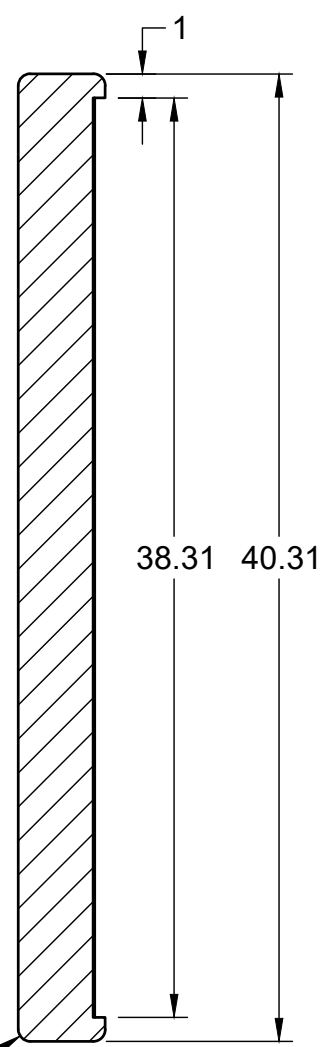


TOP VIEW
ARR 301 DINING SEAT BACK CUSHION
PN: ARR-301-0006

MATERIAL: DUAL FIRMNESS, SOFT & HI-MEDIUM

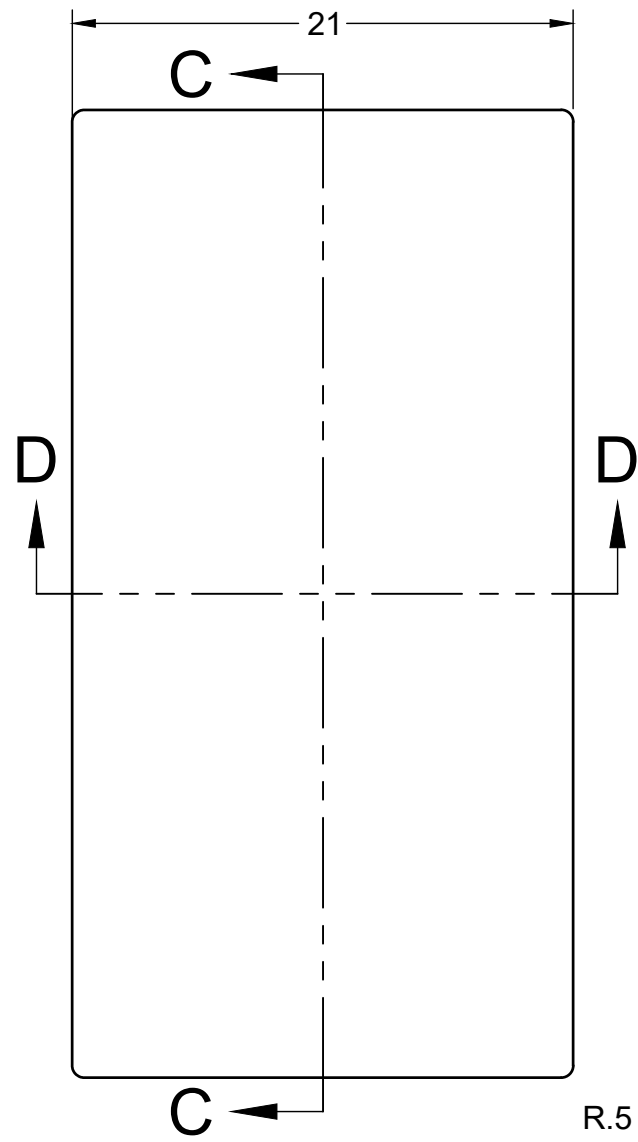


SECTION B-B
SCALE 1:8



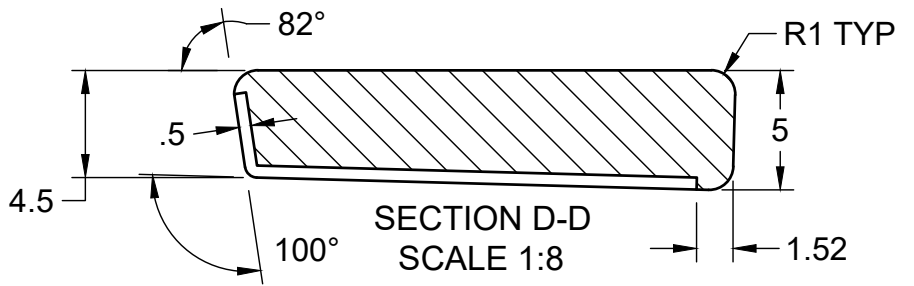
SECTION A-A
SCALE 1:8

R.5 TYP



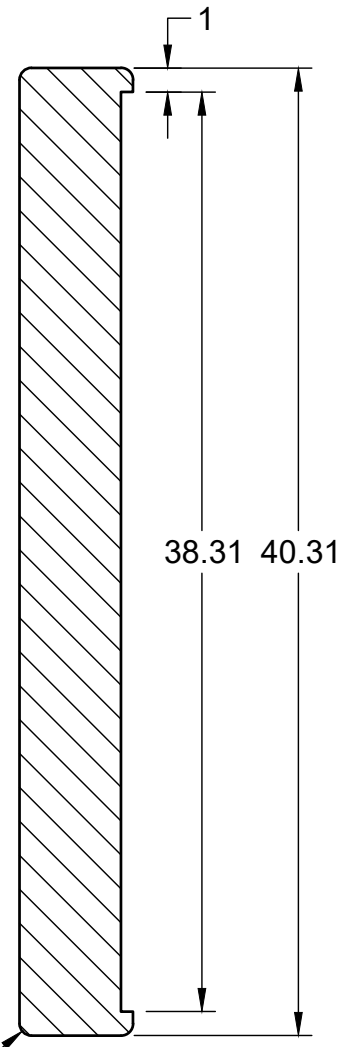
TOP VIEW
ARR 301 DINING SEAT BOTTOM CUSHION
PN: ARR-301-0007

MATERIAL: DUAL FIRMNESS, SOFT & HI-MEDIUM




SECTION D-D
SCALE 1:8

R.5 TYP



SECTION C-C
SCALE 1:8

- NOTES:
1. ALL MATERIALS MUST MEET OR EXCEED THE SPECIFICATIONS SET FORTH IN 49CFR PART 238 FOR USE IN PASSENGER CARS.
 2. SEE FOAM TEMPLATE FILES FOR COMPLETE SHAPE DEFINITION.

 ALASKA RAILROAD CORPORATION ENGINEERING SERVICES	PROJECT		MOTIVE POWER AND EQUIPMENT PASSENGER COACHES	
	TITLE			ARR 301 DINING SEAT FOAM CUSHIONS TOP & SECTION VIEWS
	APPROVED ARRC	SCALE 1:8	SHEET 1/1	
	CHECKED ARRC	DATE 9/20/2022		
DRAWN CDL				