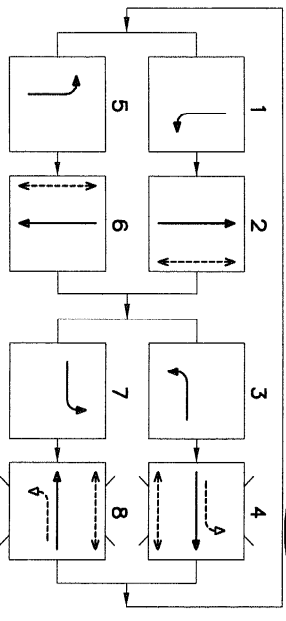


PHASE DIAGRAM



RADAR DETECTION SCHEDULE

DETECTOR ID	LOCATION	PHASE CALL	TYPE	FACING DIRECTION	REMARKS
1	SIGNAL POLE 3 SHAFT	2,5	STOP BAR	W	SMARTSENSOR MATRIX
2	SIGNAL POLE 2 MASTARM	2	ADVANCE	SW	SMARTSENSOR ADVANCE
3	SIGNAL POLE 4 SHAFT	4,7	STOP BAR	N	SMARTSENSOR MATRIX
4	SIGNAL POLE 1 SHAFT	1,6	STOP BAR	E	SMARTSENSOR MATRIX
5	SIGNAL POLE 4 MASTARM	6	ADVANCE	NE	SMARTSENSOR ADVANCE
6	SIGNAL POLE 2 SHAFT	3,8	STOP BAR	S	SMARTSENSOR MATRIX
7	SIGNAL POLE 3 SHAFT	8	ADVANCE	E	SMARTSENSOR ADVANCE

OPTICOM DETECTOR SCHEDULE

LOCATION	DETECTOR ID	PHASE CALL	FACING DIRECTION	REMARKS
SIGNAL POLE 4 MASTARM	GPS	ALL	-	-

Notes:

1. Field fit junction boxes. Survey information to be provided by others
2. Install 4" Schedule 80 PVC Conduit with pull wire (Dashed Linetype).

NOTES:

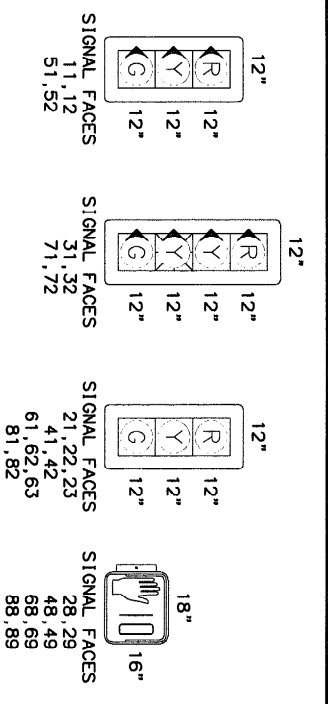
1. ROW LIES OUTSIDE VIEWPORT.

NO.	DATE	REVISION	STATE	PROJECT DESIGNATION	YEAR	SHEET NO.	TOTAL SHEETS
			ALASKA	0A15036/CFHWY00317 0A15035/CFHWY00316	2018	HA2	HA5

STATE OF ALASKA
DEPARTMENT OF TRANSPORTATION
AND PUBLIC FACILITIES

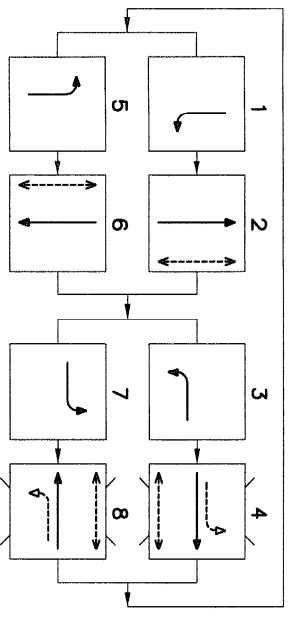
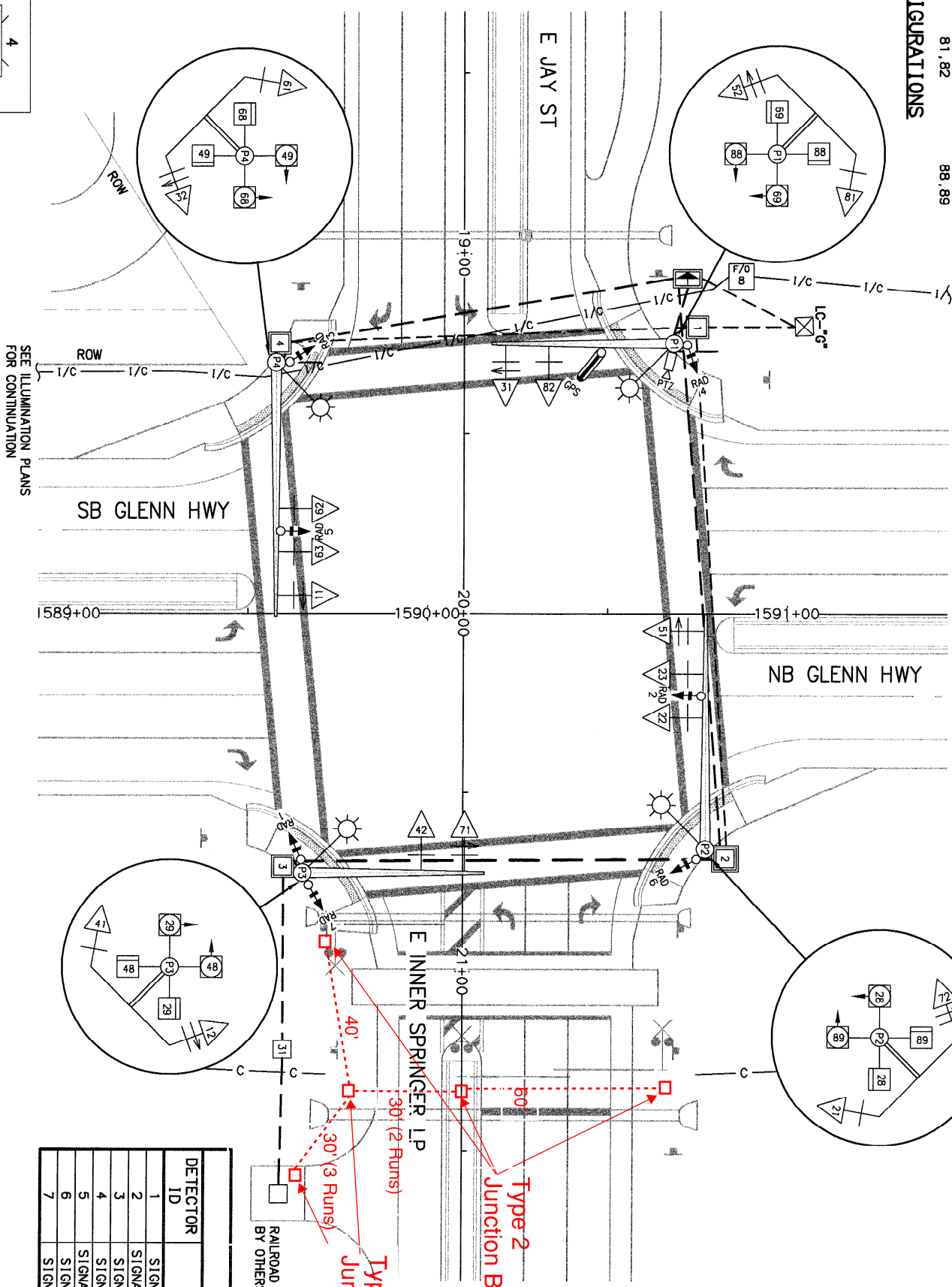
GLENN HWY: S. INNER SPRINGER
LP. TO W. ARCTIC AVE.

SIGNAL OPERATIONS
S INNER SPRINGER LOOP



SIGNAL HEAD CONFIGURATIONS

SEE ILLUMINATION PLANS FOR CONTINUATION



PHASE DIAGRAM

PEDESTRIAN MOVEMENT
 PROTECTED VEHICLE MOVEMENT
 UNPROTECTED VEHICLE MOVEMENT
 * FUTURE USE/NOT USED

OPTICOM DETECTOR SCHEDULE				
LOCATION	DETECTOR ID	PHASE CALL	FACING DIRECTION	REMARKS
SIGNAL POLE 1 MASTARM	GPS	ALL	-	-

RADAR DETECTION SCHEDULE					
DETECTOR ID	LOCATION	PHASE CALL	TYPE	FACING DIRECTION	REMARKS
1	SIGNAL POLE 3 SHAFT	2, 5	STOP BAR	W	SMARTSENSOR MATRIX
2	SIGNAL POLE 2 MASTARM	2	ADVANCE	SW	SMARTSENSOR ADVANCE
3	SIGNAL POLE 4 SHAFT	4, 7	STOP BAR	N	SMARTSENSOR MATRIX
4	SIGNAL POLE 1 SHAFT	1, 6	STOP BAR	E	SMARTSENSOR MATRIX
5	SIGNAL POLE 4 MASTARM	6	ADVANCE	NE	SMARTSENSOR ADVANCE
6	SIGNAL POLE 2 SHAFT	3, 8	STOP BAR	S	SMARTSENSOR MATRIX
7	SIGNAL POLE 3 SHAFT	8	ADVANCE	E	SMARTSENSOR ADVANCE

Notes:
 1. Field fit junction boxes. Survey information to be provided by others
 2. Install 4" Schedule 80 PVC Conduit with pull wire (Dashed Linetype).

NO.	DATE	REVISION	STATE	PROJECT DESIGNATION	YEAR	SHEET NO.	TOTAL SHEETS
			ALASKA	0A15036/CFHMY00317 0A15035/CFHMY00316	2018	HB2	HB5

STATE OF ALASKA
 DEPARTMENT OF TRANSPORTATION
 AND PUBLIC FACILITIES
 GLENN HWY: S. INNER SPRINGER
 LP. TO W. ARCTIC AVE.
 SIGNAL OPERATIONS
 E INNER SPRINGER LOOP

