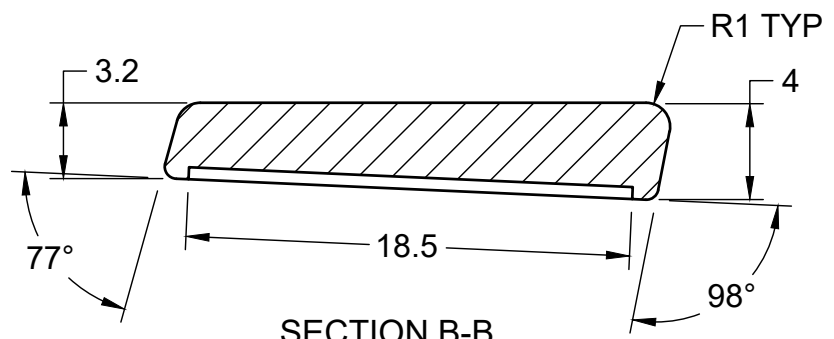


TOP VIEW

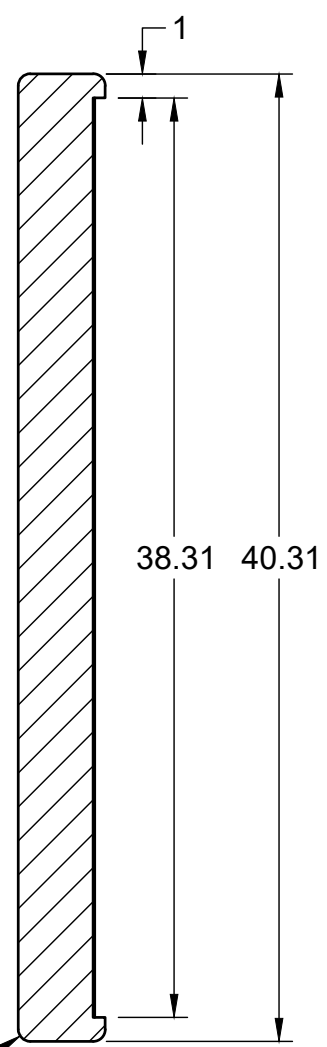
ARR 301 DINING SEAT BACK CUSHION

PN: ARR-301-0006

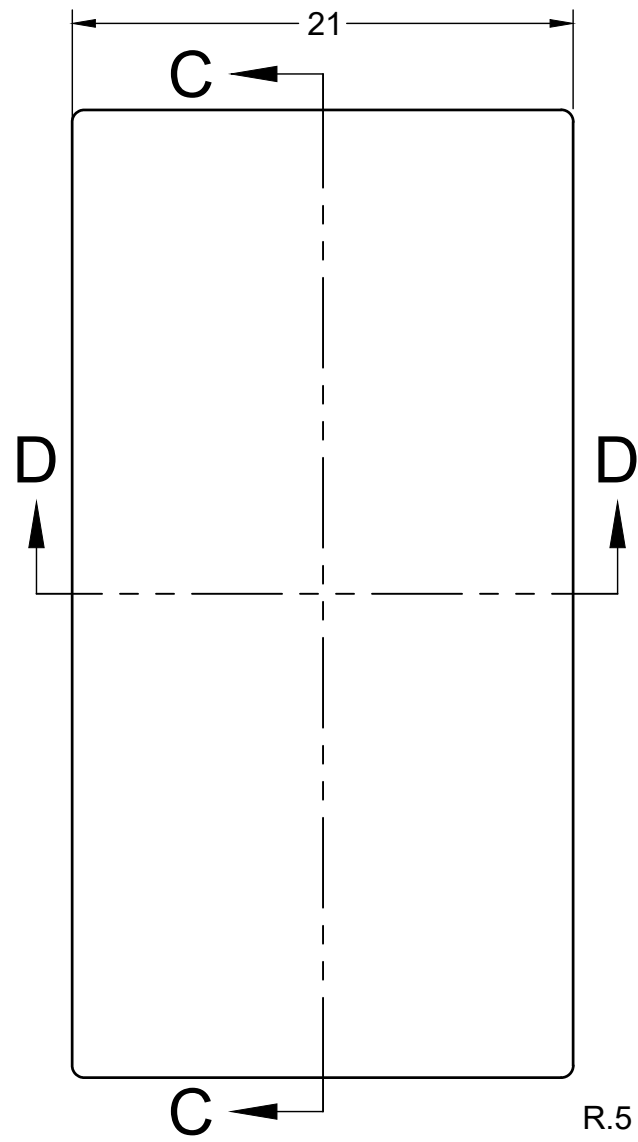
MATERIAL: DUAL FIRMNESS, SOFT & HI-MEDIUM



SECTION B-B
SCALE 1:8



SECTION A-A
SCALE 1:8

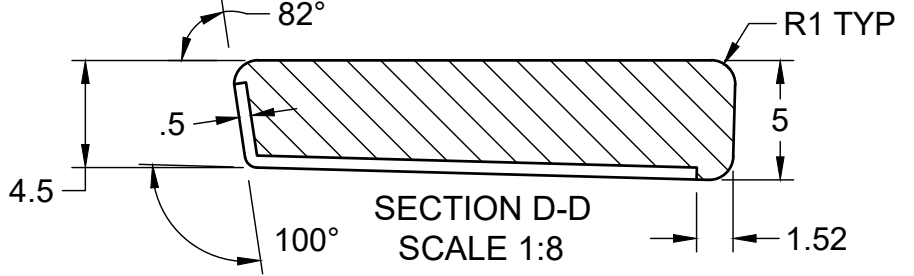


TOP VIEW

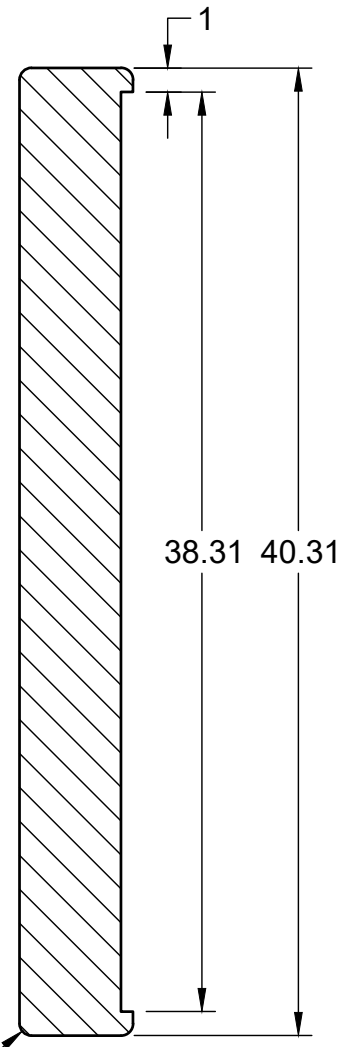
ARR 301 DINING SEAT BOTTOM CUSHION

PN: ARR-301-0007

MATERIAL: DUAL FIRMNESS, SOFT & HI-MEDIUM



SECTION D-D
SCALE 1:8



SECTION C-C
SCALE 1:8

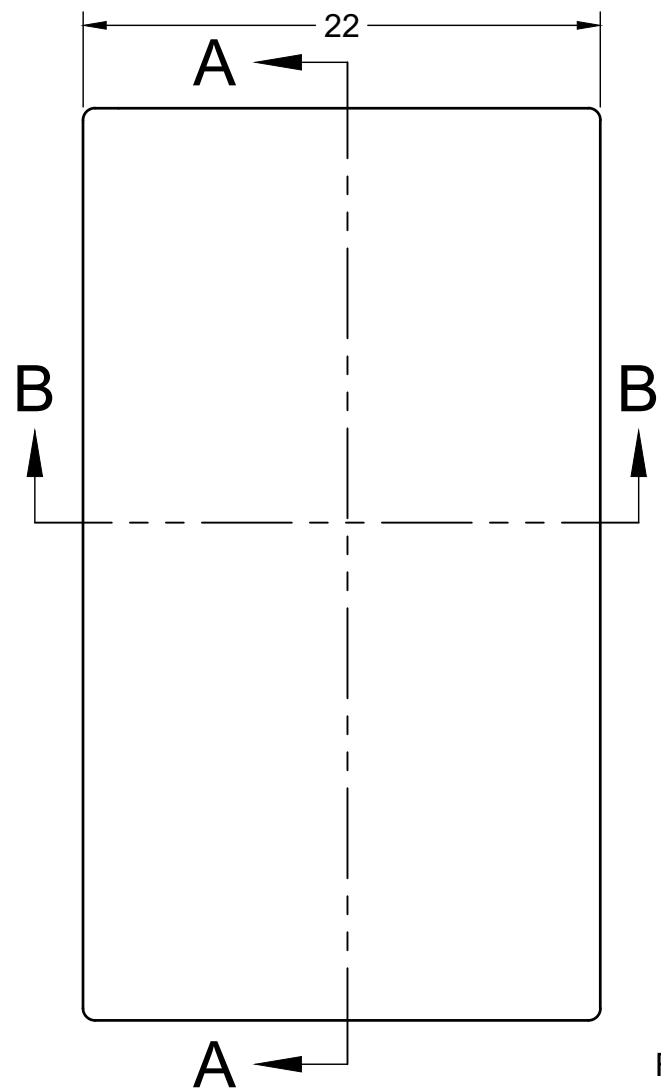
NOTES:

1. ALL MATERIALS MUST MEET OR EXCEED THE SPECIFICATIONS SET FORTH IN 49CFR PART 238 FOR USE IN PASSENGER CARS.
2. SEE FOAM TEMPLATE FILES FOR COMPLETE SHAPE DEFINITION.



ALASKA RAILROAD
CORPORATION
ENGINEERING SERVICES

PROJECT		MOTIVE POWER AND EQUIPMENT PASSENGER COACHES	
TITLE			
ARR 301 DINING SEAT FOAM CUSHIONS TOP & SECTION VIEWS			
APPROVED ARRC	SCALE 1:8	SHEET 1/1	
CHECKED ARRC	DATE		
DRAWN CDL	9/20/2022		

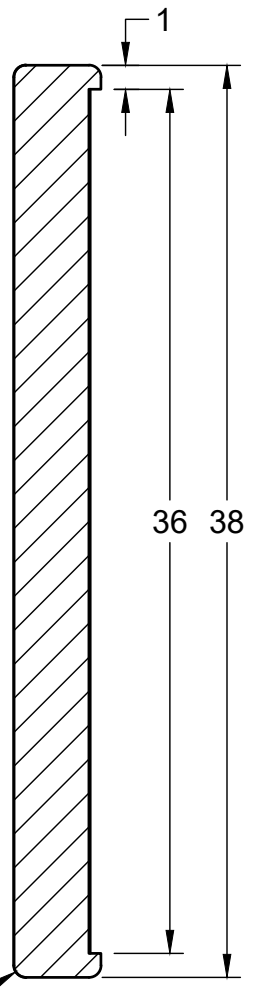


TOP VIEW

ARR 352 DINING SEAT BACK CUSHION

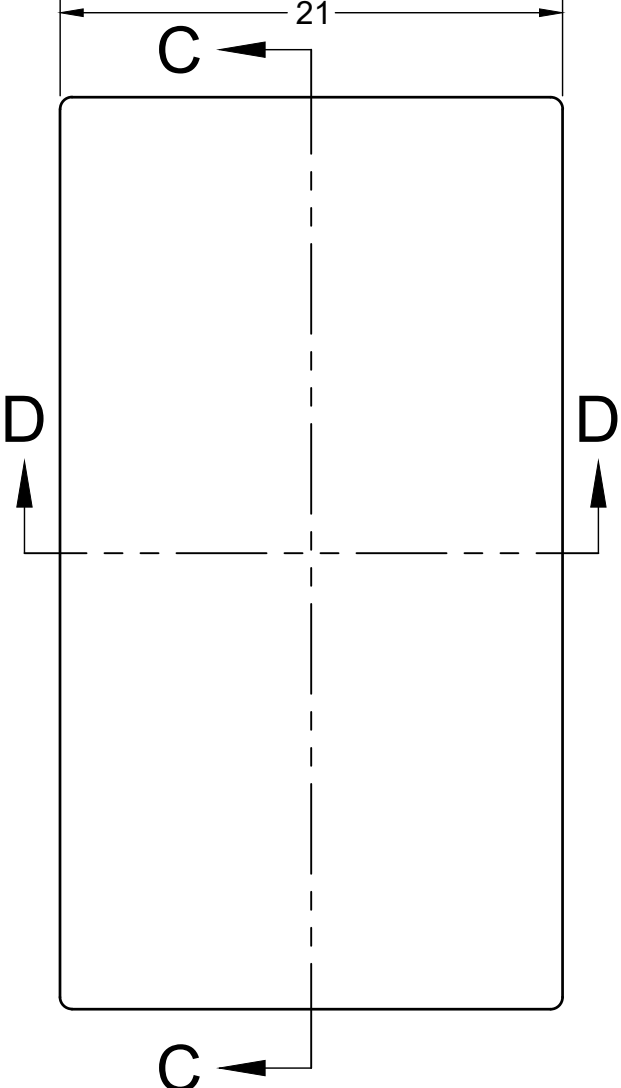
PN: ARR-352-0004

MATERIAL: DUAL FIRMNESS, SOFT & HI-MEDIUM



R.5 TYP

SECTION A-A
SCALE 1:8

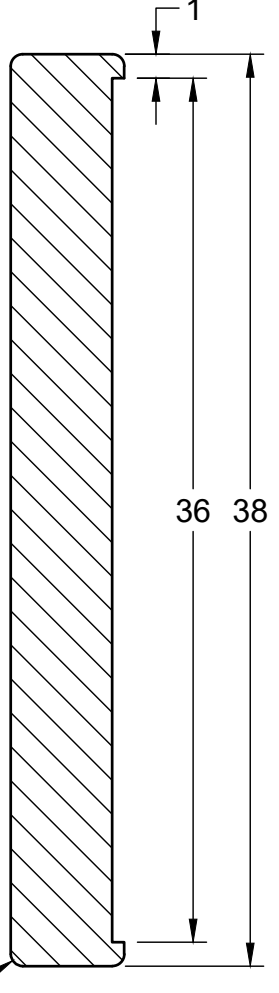


TOP VIEW

ARR 352 DINING SEAT BOTTOM CUSHION

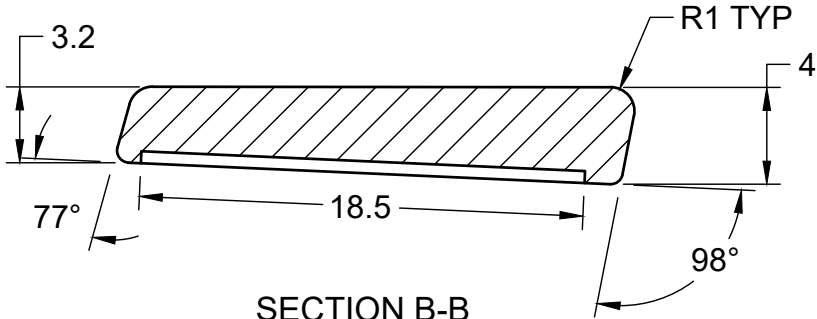
PN: ARR-352-0005

MATERIAL: DUAL FIRMNESS, SOFT & HI-MEDIUM

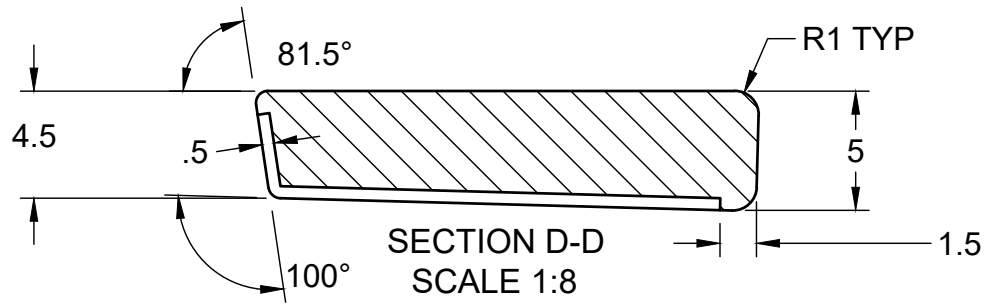


R.5 TYP

SECTION C-C
SCALE 1:8




SECTION B-B
SCALE 1:8

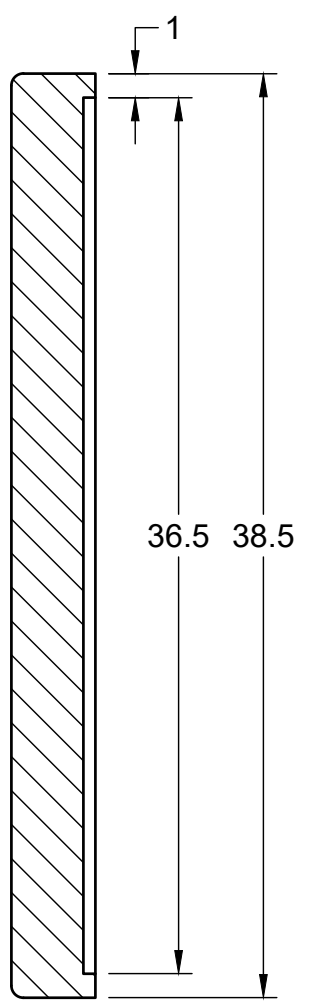
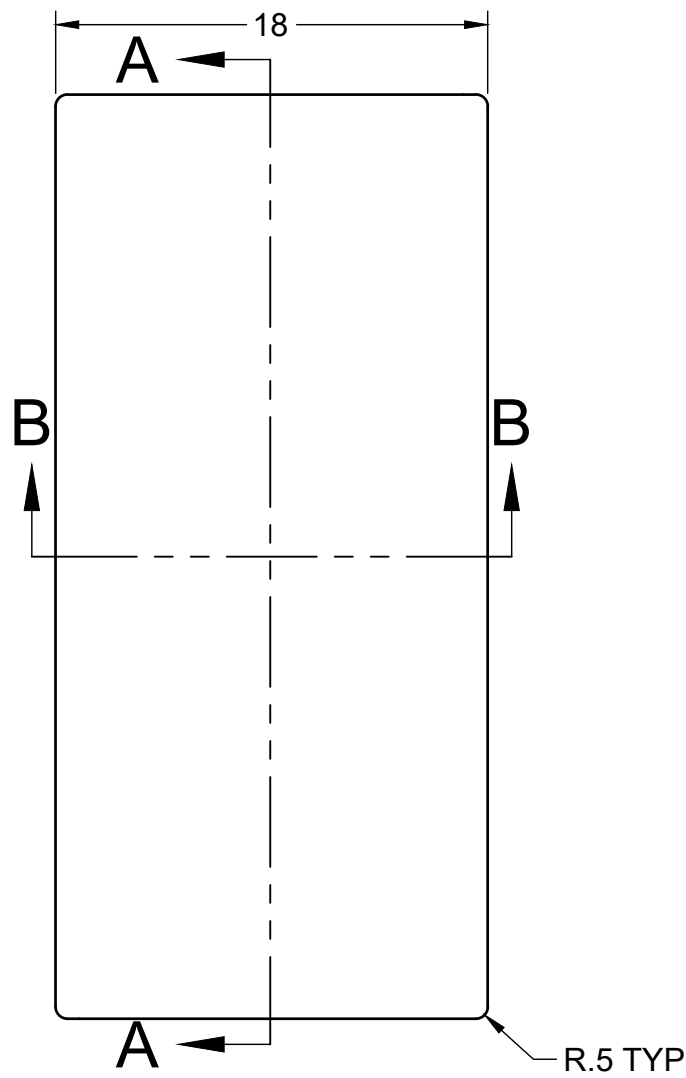


SECTION D-D
SCALE 1:8

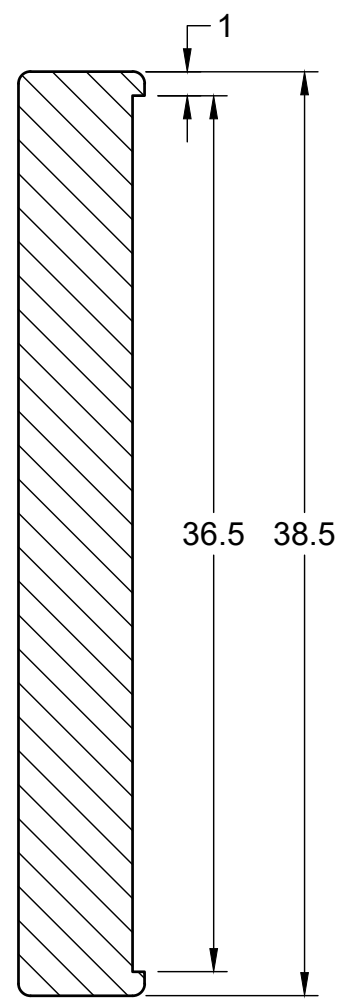
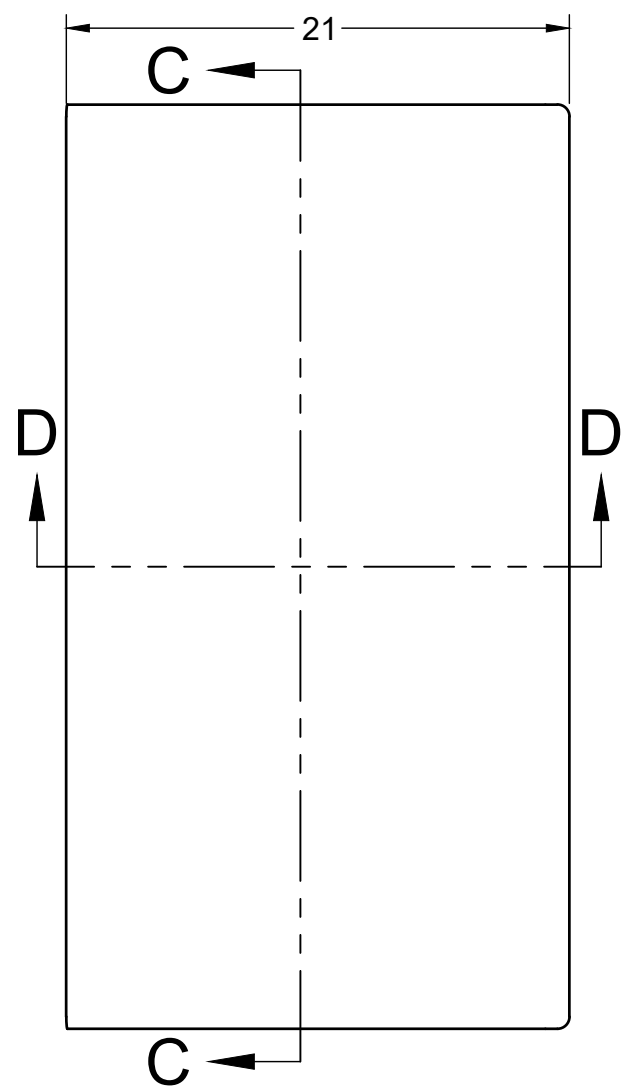
NOTES:

1. ALL MATERIALS MUST MEET OR EXCEED THE SPECIFICATIONS SET FORTH IN 49CFR PART 238 FOR USE IN PASSENGER CARS.
2. SEE FOAM TEMPLATE FILES FOR COMPLETE SHAPE DEFINITION.

 ALASKA RAILROAD CORPORATION ENGINEERING SERVICES	PROJECT		MOTIVE POWER AND EQUIPMENT PASSENGER COACHES	
	TITLE			ARR 352 DINING SEAT FOAM CUSHIONS TOP & SECTION VIEWS
	APPROVED ARRC	SCALE 1:8	SHEET 1/1	
	CHECKED ARRC	DATE 9/20/2022		
DRAWN CDL				

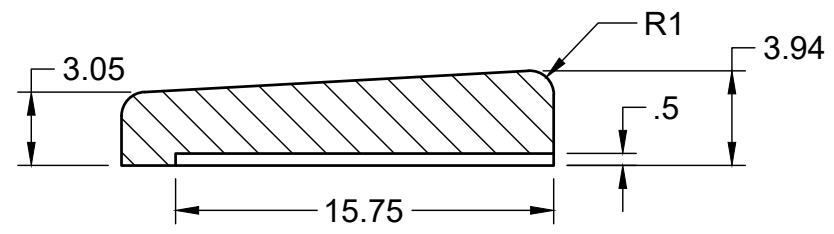


SECTION A-A
SCALE 1:8

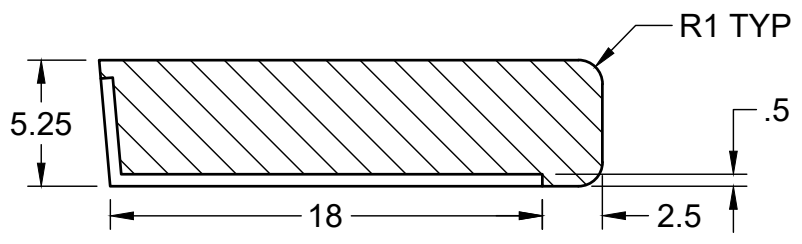


TOP VIEW
ARR 451/2 DINING SEAT BOTTOM CUSHION
PN: ARR-45X-0002
MATERIAL: DUAL FIRMNESS, SOFT & HI-MEDIUM

SECTION C-C
SCALE 1:8




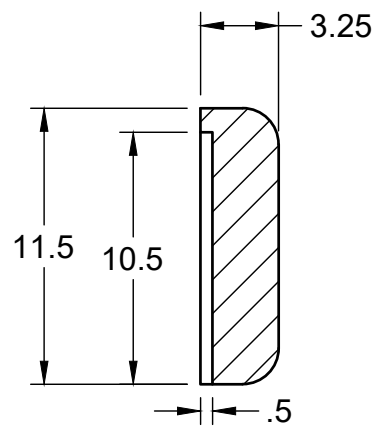
SECTION B-B
SCALE 1:8



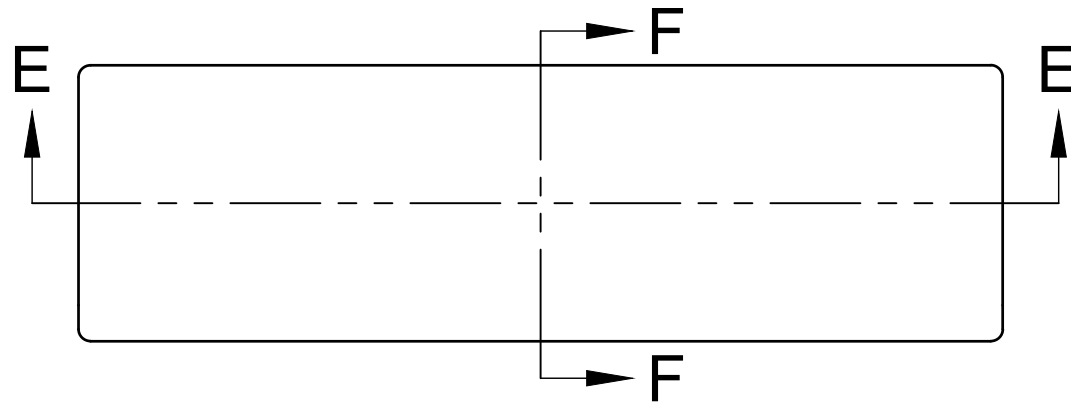
SECTION D-D
SCALE 1:8

- NOTES:
1. ALL MATERIALS MUST MEET OR EXCEED THE SPECIFICATIONS SET FORTH IN 49CFR PART 238 FOR USE IN PASSENGER CARS.
 2. SEE FOAM TEMPLATE FILES FOR COMPLETE SHAPE DEFINITION.

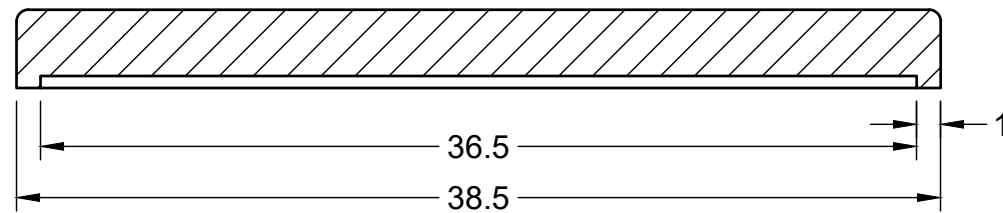
 ALASKA RAILROAD CORPORATION ENGINEERING SERVICES	PROJECT MOTIVE POWER AND EQUIPMENT PASSENGER COACHES		
	TITLE ARR 451/452 DINING SEAT FOAM CUSHIONS TOP & SECTION VIEWS		
	APPROVED ARRC	SCALE 1:8	SHEET 1/2
	CHECKED ARRC	DATE 9/22/2022	
DRAWN CDL			



SECTION F-F
SCALE 1:8



FRONT VIEW
ARR 451/2 DINING SEAT HEADREST CUSHION
PN: ARR-45X-0003
MATERIAL: DUAL FIRMNESS, SOFT & HI-MEDIUM



SECTION E-E
SCALE 1:8

NOTES:

1. ALL MATERIALS MUST MEET OR EXCEED THE SPECIFICATIONS SET FORTH IN 49CFR PART 238 FOR USE IN PASSENGER CARS.
2. SEE FOAM TEMPLATE FILES FOR COMPLETE SHAPE DEFINITION.



ALASKA RAILROAD
CORPORATION
ENGINEERING SERVICES

PROJECT			MOTIVE POWER AND EQUIPMENT PASSENGER COACHES
TITLE			ARR 451/452 DINING SEAT FOAM CUSHIONS TOP & SECTION VIEWS
APPROVED	ARRC	SCALE	1:8
CHECKED	ARRC	DATE	9/22/2022
DRAWN	CDL	SHEET 2/2	