

## BILL OF MATERIALS

ITEM NO.	NO. REQUIRED	DESCRIPTION	SIZE	MATERIAL
1	1	SPRING PLANK BODY	2' 1 3/4" X 1" X 5' 6 1/4"	ASTM A514
2	4	SPRING PLANK SEAT	4" X 1 1/8" X 9 5/8"	ASTM A36
3	4	SPRING PLANK WEAR PLATE	3 1/16" X 1/4" X 9 5/8"	ASTM AR235
4	16	RETAINING LUG	3/8" X 1/2" X 3"	ASTM A36
5	16	RETAINING LUG	3/8" X 1/2" X 3"	ASTM A36
6	4	SPRING PERCH SPACER	9 3/4" X 6 1/2" X 1"	ASTM A36
7	N/A	PAINTING SPEC.	SINGLE STAGE EPOXY PRIMER (ANY COLOR)	

**NOTES:**

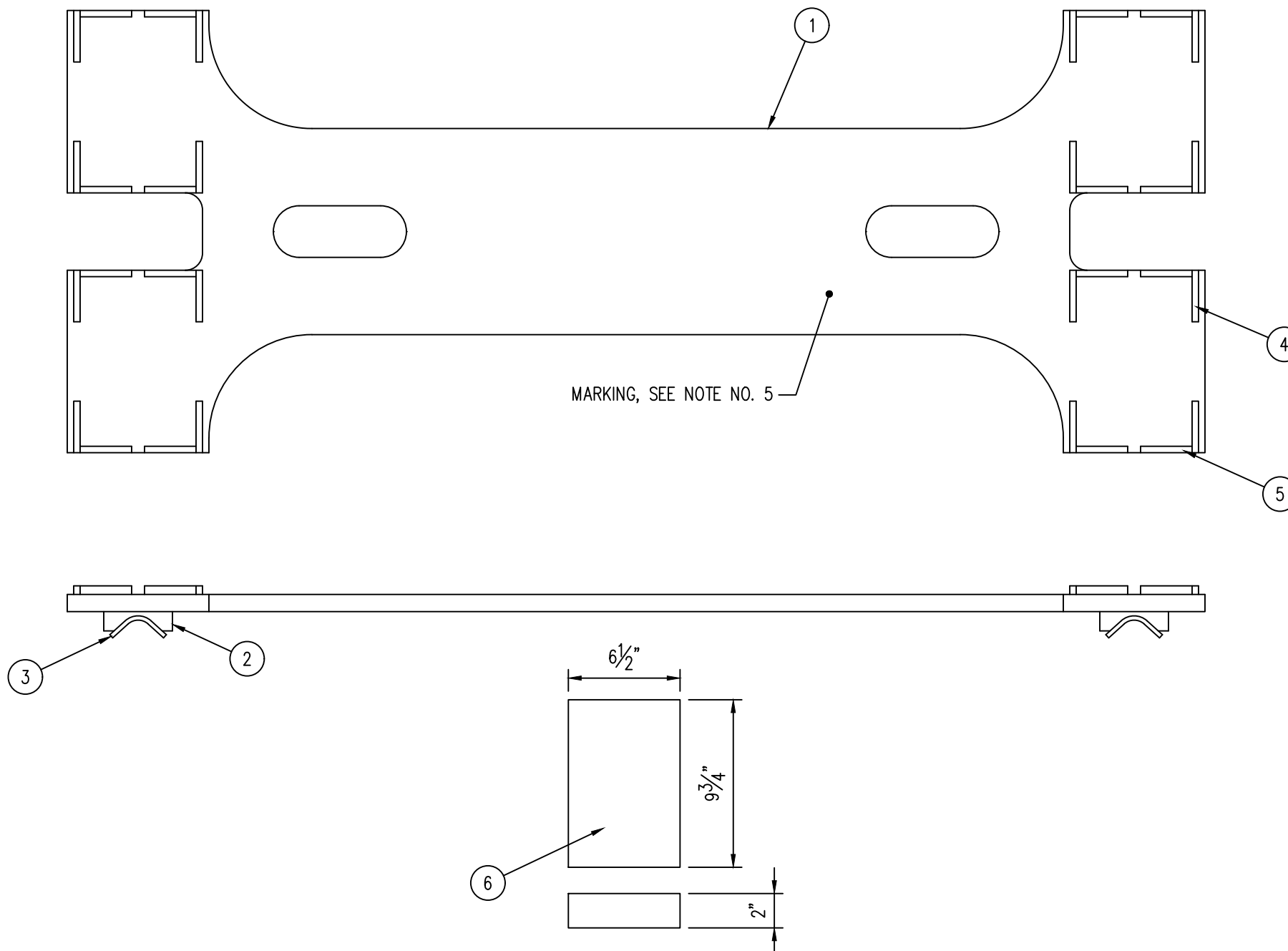
1. MATERIAL CERTIFICATION AND METALLURGICAL TEST REPORTS TO BE PROVIDED FOR ALL MATERIAL SUPPLIED.
2. CUT SPRING PLANK BODY FROM RAW MATERIAL WITH GRAIN ALIGNED TO THE 5'-6 1/4" DIRECTION USING WATER JET CUTTER TO MINIMIZE PART HEATING.
3. BREAK SHARP CORNERS.
4. THIRD PARTY MAGNETIC PARTICLE INSPECTION PER ASTM E709, ACCEPTANCE CRITERIA PER ASTM TYPE I, DEGREE I.
5. STENCIL ONE SIDE WITH LOW STRESS STAMP 3/8" HIGH CHARACTERS:  
 MANUFACTURER'S IDENTIFICATION  
 DATE MADE  
 MANUFACTURER'S SERIAL NO.  
 PART NUMBER - ARRC36633
6. ALL WELDS TO BE MADE WITH GMAW ER70S-XXX-XX ELECTRODES OR EQUIVALENT UNLESS OTHERWISE NOTED.
7. ALL WELDERS SHALL BE QUALIFIED FOR THE WELD PROCEDURE PER AWS D15.1.
8. ALL WELD SPATTER AND SLAG SHALL BE REMOVED.
9. PROVIDE CHARPY V-NOTCH IMPACT TOUGHNESS FOR A514 PLATE PER ASTM E23; MINIMUM VALUE OF 35 FT/LB @ 0°F.
10. PREHEAT SPRING PLANK BODY TO MINIMUM INTERPASS TEMP OF 125°F, MAX 400° F DURING WELDING OPERATIONS.

**MATERIAL SPECIFICATION:**

STEEL - ASTM A514 OR EQUIVALENT - 1" PLATE

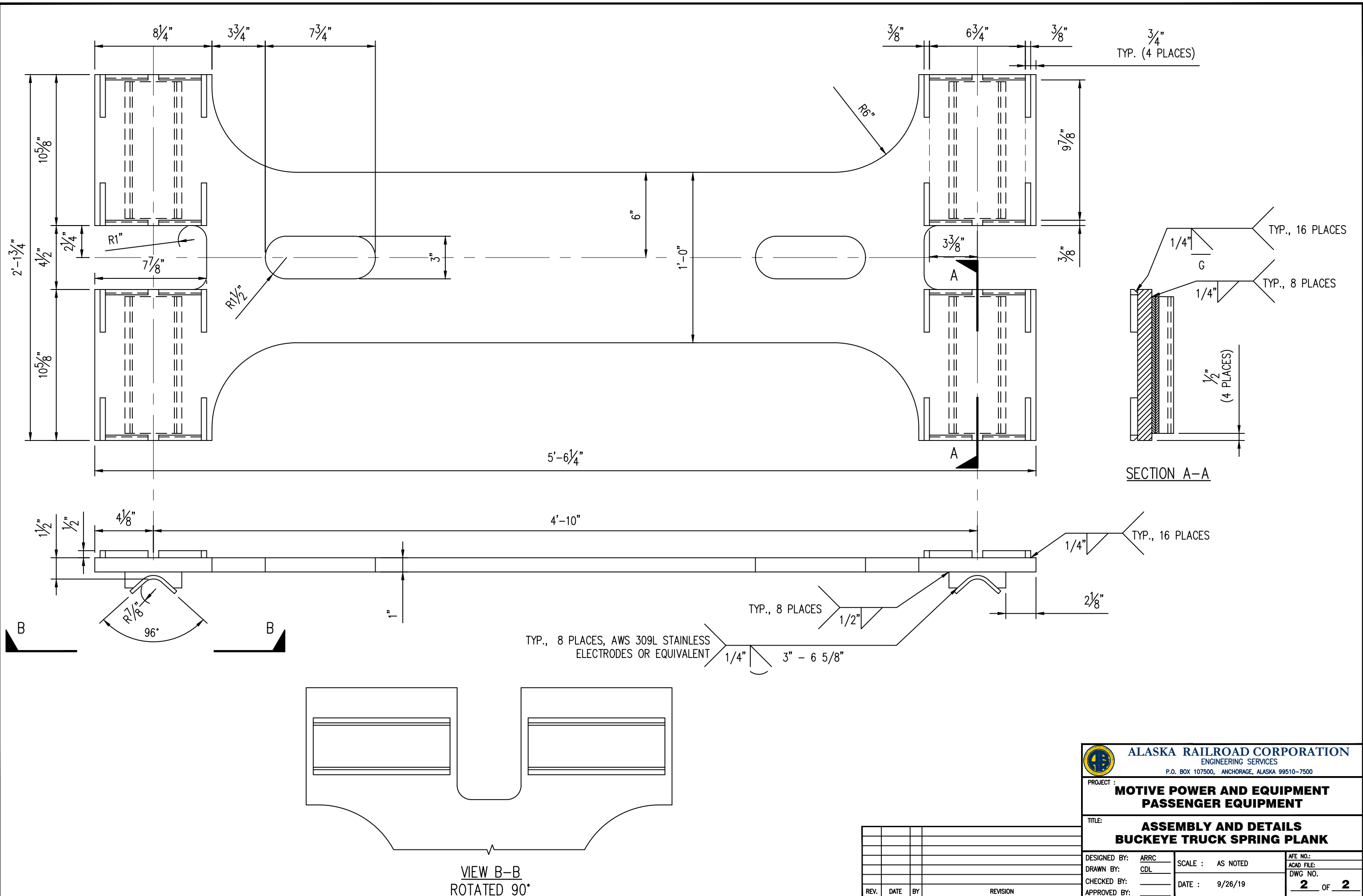
**MECHANICAL PROPERTIES:**


YIELD                    100,000 PSI  
 TENSILE                115,000 PSI  
 ELONGATION IN 8"   16%



REV.	DATE	BY	REVISION

<b>ALASKA RAILROAD CORPORATION</b> ENGINEERING SERVICES <small>P.O. BOX 107500, ANCHORAGE, ALASKA 99510-7500</small>		
PROJECT :		
<b>MOTIVE POWER AND EQUIPMENT PASSENGER EQUIPMENT</b>		
TITLE:		
<b>B.O.M. AND NOTES BUCKEYE TRUCK SPRING PLANK</b>		
DESIGNED BY: <u>ARRC</u>	SCALE : AS NOTED	AFE NO.:
DRAWN BY: <u>CDL</u>	DATE : 9/26/2019	ACAD FILE:
CHECKED BY: _____		DWG NO. <b>1</b> OF <b>2</b>
APPROVED BY: _____		



 <b>ALASKA RAILROAD CORPORATION</b> ENGINEERING SERVICES P.O. BOX 107500, ANCHORAGE, ALASKA 99510-7500		
PROJECT : <b>MOTIVE POWER AND EQUIPMENT PASSENGER EQUIPMENT</b>		
TITLE: <b>ASSEMBLY AND DETAILS BUCKEYE TRUCK SPRING PLANK</b>		
DESIGNED BY: ARRC	SCALE : AS NOTED	AFE NO.:
DRAWN BY: CDL	DATE : 9/26/19	ACAD FILE:
CHECKED BY:		DWG NO. <b>2</b> OF <b>2</b>
APPROVED BY:		

REV.	DATE	BY	REVISION