



ALASKA RAILROAD CORPORATION
327 W. Ship Creek Ave.
Anchorage, AK 99501.

April 3, 2020

Addendum 2

ITB # 20-13-207520

BUILDING 26 INDUSTRIAL WATER UPGRADES

This ITB will close as follows:

Proposals will be received until Wednesday, April 15, 2020 @ 3:00 PM local Alaska time.

BID INFORMATION, CONDITIONS & INSTRUCTIONS:

To help honor Municipality of Anchorage (MOA) Mayor Berkowitz's issuance of EO-03, to "Hunker Down", the ARRC will be modifying its bid submission requirements.

ELECTRONIC BID: Emailed bids will be accepted for this solicitation. Please email bids to HumphreyC@akrr.com. Please place a Document Open Password on your PDF Bid Submission and provide that password as we read the bids aloud at bid opening. For instructions on how to set a Document Open Password on a PDF, follow the link below:

<https://helpx.adobe.com/acrobat/using/securing-pdfs-passwords.html>

Bids will be opened and read aloud via a teleconference. The local dial-in number is **907-265-8777**. When prompted, dial meeting number **4470**. When prompted, press # and then enter access code **007**.

DUE TO POSSIBLE LIMITED STAFFING AT BONDING AGENCIES AND NEW ELECTRONIC BID PROCEDURES, WE WILL ACCEPT COPIES OF BID BONDS AT CLOSING. ORIGINALS WILL NEED TO BE MAILED TO:

Alaska Railroad Corporation; Contracts
327 Ship Creek Avenue, 2nd Floor
Anchorage, Alaska 99501

PRE-BID SITE VISIT- #2:

We will hold a second pre-bid site visit on **Tuesday, April 7 at 10:00 a.m.** Please remember that social distancing is required during this visit. We ask that you confirm the number of attendees in advance so that we may plan accordingly and avoid a group of more than 10.

QUESTIONS

1. Div. 22 does not list a basis of design for the new hose bibbs. Please provide the recommended manufacture and model. **Interior Hose Bibb: Angle pattern sillcock, bent nose, 3/4 inch hose connection, rough chrome plate finish, wheel handle. Woodford Wall Faucet Model 21- 3/4" C Inlet Combination.**
2. On sheet M2 (3 of 8) there is one hose reel shown. Div. 22 does not list a basis of design. Please provide the recommended manufacture and model. **The hose reel referenced on sheet M2 does not need to be replaced.**
3. Please confirm Builders Risk Insurance is required per 5.4.14 of the General Conditions. **Builders Risk Insurance is not required for this job.**
4. Please confirm \$5 million pollution coverage is required as it states where applicable per 5.4.13 of the General Conditions. **Section 5.4.13 will not apply for this job.**
5. Want to verify that we are tying into existing hose bib and hose reels? **ARRC's intent with this work was to have all new hose bibs installed and reuse all hose reels except where plans call for connect to existing piping. All fixtures on existing piping are to remain. All materials in the design and specs including mechanical fixtures are to be contractor furnished.**

If there are any questions regarding this addendum please let me know.

Thank you,

Candice Humphrey
Procurement Administrator
Alaska Railroad Corporation

FOR NON-FREEZING AREAS

Wall Faucet Model 21



The Model 21 Wall Faucet is designed for irrigation purposes to be used indoors or outdoors in mild climate areas on homes, service stations, churches, motels, drive-in restaurants, etc.

THIS UNIT OFFERS NO ANTI-SIPHON PROTECTION

SPECIFICATIONS:

EXTERIOR FINISH - Chrome (CH) Standard
Optional: Rough Brass (BR) or Polished Chrome (PC)

PACKING - EPDM

PACKING NUT - Adjustable brass nut with deep stem guard

VALVE SEAT - Standard "O" size washer

HANDLES - Standard polycarbonate wheel handle and loose tee key.
Optional: Metal wheel handle only.

MAX PRESSURE: 125 p.s.i.

MAX TEMPERATURE: 120° F

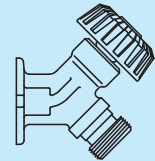
SHIPPING WEIGHT (per unit): 1 lb

TAMPER-PROOF LOCK SHIELD

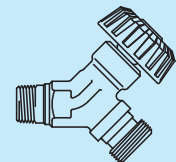


Inlet Descriptions

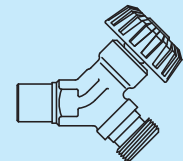
P-1/2 Inlet
1/2" FPT
P-3/4 Inlet
3/4" FPT



CP Inlet
COMBINATION
1/2" COPPER TUBE
1/2" MPT



C Inlet
COMBINATION
1/2" COPPER TUBE
3/4" COPPER TUBE

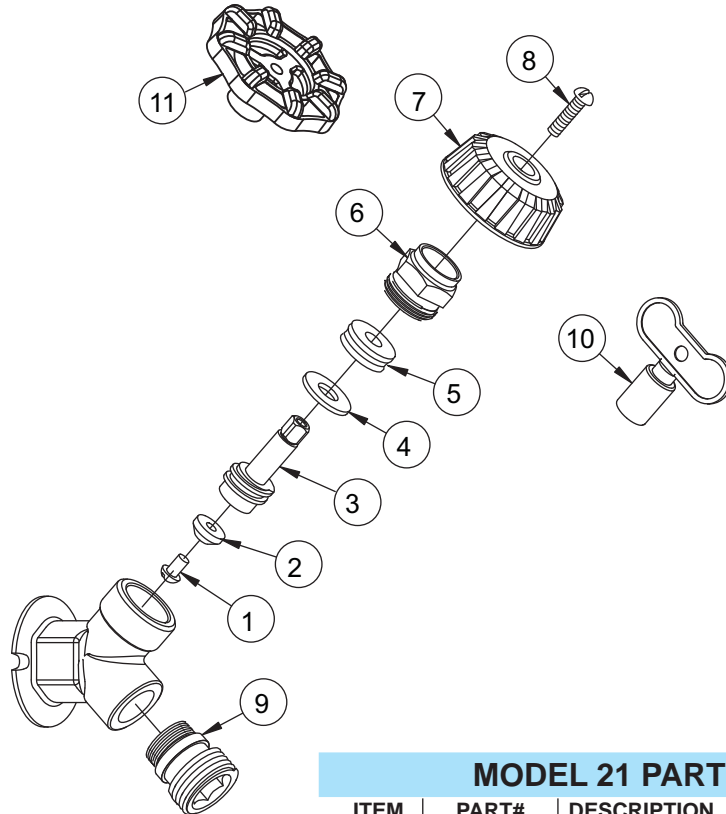


For instructions go to
www.woodfordmfg.com or call 1-800-621-6032



When ordering, specify model, inlet and finish

WOODFORD



MODEL 21 PARTS LIST

ITEM	PART#	DESCRIPTION
1	30009	Washer Screw
2	30008	Washer
3	30104	Operating Stem
4	30105	Packing Support Washer
5	30247	EPDM Packing
6	30109	Packing Nut - Chrome
	30107	Packing Nut - Brass
7	30120	Wheel Handle - Clear polycarbonate
	30233	Wheel Handle - Tan polycarbonate
8	30121	Handle Screw - Nickel
	30002	Handle Screw - Brass
9	55437	Hose Nozzle w/O-Ring - Chrome
	55435	Hose Nozzle w/O-Ring - Brass
10	50009	Tee Key
11	30106	Wheel handle - Metal (unpainted)
	30239	Wheel Handle - Metal (painted)
	RK-24	Chrome Repair Kit (Includes items 1-8) (Chrome packing nut and clear handle)
	RK-H34	Brass Repair Kit (Includes items 1-8) (Brass packing nut and tan handle)

Manufactured under one or more of the following patents: U.S. Patents: 3,414,001; 3,543,786; 4,178,956; 4,316,481; D216,790; D216,791; D277,365; D277,366; Canada Patents: 822,458; 852,529; 865,995

For more information contact...

WOODFORD MANUFACTURING COMPANY

2121 Waynoka Road, Colorado Springs, Colorado 80915 • Phone: (800) 621-6032 • Fax: (800) 765-4115
To view our complete product line visit: www.woodfordmfg.com or email: sales@woodfordmfg.com
A Division Of WCM Industries, Inc.