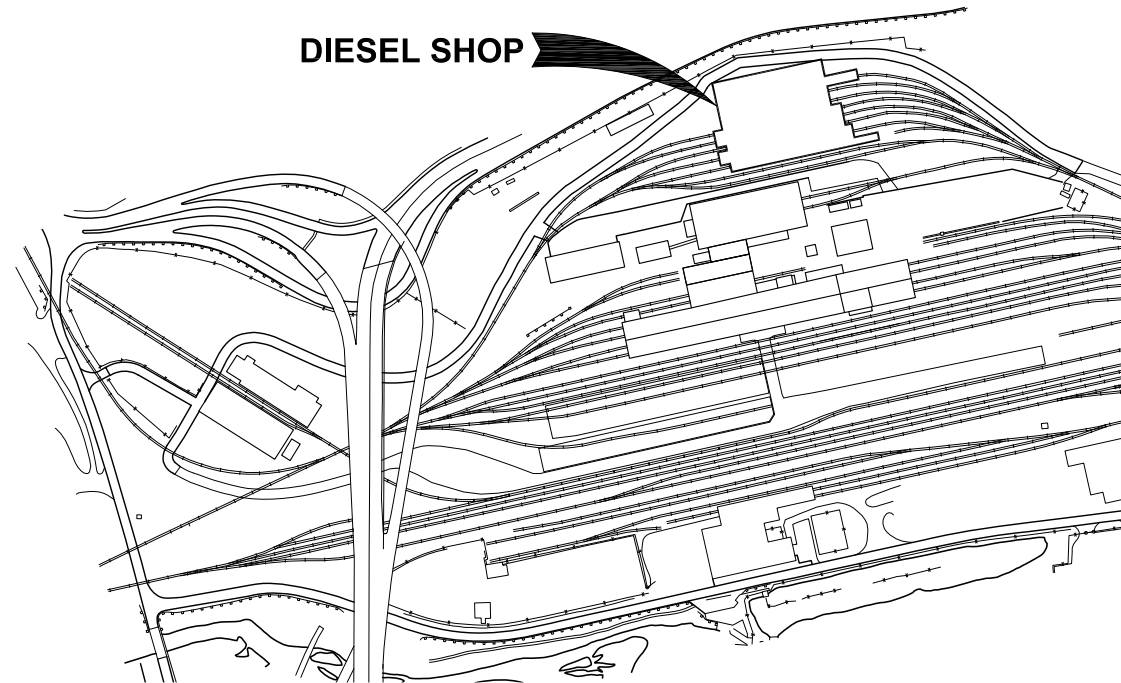




Alaska Railroad Corporation

ANCHORAGE DIESEL SHOP BUILDING 26

2022 NORTH CLERESTORY WALL IMPROVEMENTS

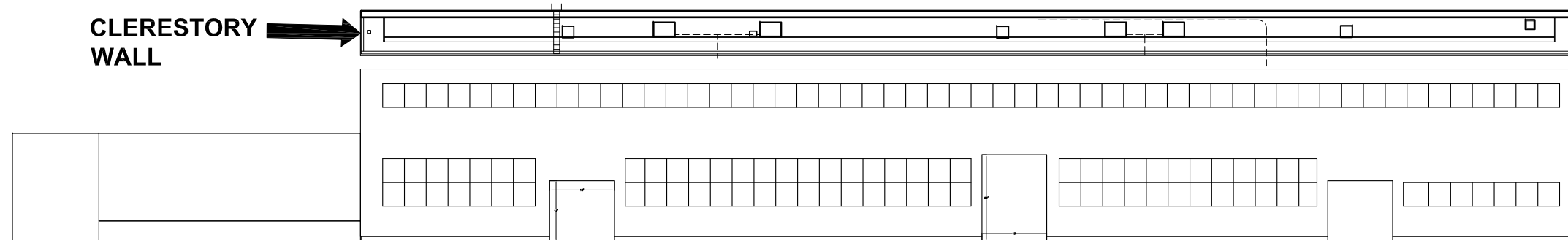


SITE MAP ACCESS GAINED AT 485 OCEAN DOCK ROAD
SCALE: NO SCALE

DRAWING INDEX:

DRAWING	DESCRIPTION
G1	TITLE SHEET (THIS DRAWING)
G2	SPECIFICATIONS AND INSTRUCTION
A1	DEMOLITION ELEVATION
A2	DEMOLITION SECTION DETAILS
A3	DEMOLITION SECTION DETAILS
A4	DEMOLITION DETAILS
A5	IMPROVEMENTS ELEVATION
A6	IMPROVEMENTS SECTION DETAILS
A7	IMPROVEMENTS SECTION DETAILS
A8	IMPROVEMENTS SECTION DETAILS

CLERESTORY
WALL



DIESEL SHOP NORTH ELEVATION
SCALE: NO SCALE

 **ALASKA RAILROAD CORPORATION**
ENGINEERING SERVICES
P.O. BOX 107500, ANCHORAGE, ALASKA 99510-7500

PROJECT: **ANCHORAGE DIESEL SHOP
CLERESTORY WALL IMPROVEMENTS**

TITLE: **TITLE SHEET
SITE MAP, INDEX & ELEVATION**

DESIGNED BY: ARRC	SCALE: AS NOTED	G1	AFE NO.:
DRAWN BY: ARRC	DATE: JAN 2022		ACAD FILE:
CHECKED BY: ARRC			DWG NO.:
APPROVED BY: CDR			1 OF 10

REV.	DATE	BY	REVISION

WALL PANEL REPLACEMENT:



- A. DESIGN WIND PRESSURE ON BUILDING WALL COMPONENTS AND CLADDING, USING ASCE 7-16, IS ±23.23 PSF. THREE (3) SECOND GUST WIND SPEED IS 127 MPH.
- B. WORK IS TO BE COMPLETED BETWEEN MAY 15 AND SEPTEMBER 15 2022. ONCE WORK HAS BEGUN, WORK IS TO CONTINUE WITHOUT SIGNIFICANT BREAKS UNTIL COMPLETE.
- C. EXISTING WOOD AND STEEL IS ASSUMED TO BE COATED WITH LEAD BASED PAINT. DUST WITHIN BUILDINGS MAY CONTAIN ASBESTOS. AVOID CREATING DUST FROM OPERATIONS. WHEN DUST REMOVAL IS NECESSARY, USE WET METHODS. DO NOT USE COMPRESSED AIR TO BLOW DIRT OR DEBRIS WITHIN SHOPS.
- D. COORDINATE WORK AT HEIGHTS WITHIN BUILDING TO AVOID HAVING TO BREATHE DIESEL EXHAUST FROM RUNNING LOCOMOTIVES.
- E. PROTECT NEW WORK AND MATERIALS FROM WEATHER.
- F. PROTECT ROOFING FROM DAMAGE, INCLUDING CHEMICAL, AND EXCESSIVE WEAR. MAXIMUM ROOF LOADING IS 40 PSF.
- G. DO NOT WALK ON OR MOVE MATERIALS OVER MARKED ROOFING BLISTERS.

SAFETY:

- A. CONTRACTOR SHALL, AT A MINIMUM, COMPLY WITH THE FOLLOWING:
 - 1. PERSONNEL HAVE AND WEAR AT ALL TIMES WHEN WORKING IN ALASKA RAILROAD RAILYARD: HARD HAT, SAFETY GLASSES, HIGH VISIBILITY VEST, SAFETY TOE WORK BOOTS AND COVID FACE MASK. OUTDOORS, MASK IS REQUIRED WHEN WORKING WITHIN SIX (6) FEET OF ANOTHER PERSON.
 - 2. FALL PROTECTION REQUIREMENTS WHEN WORKING AT HEIGHTS.
 - 3. PROVIDE LOCK OUT/TAG OUT FOR ELECTRICALLY OPERATED EQUIPMENT WITHIN THEIR SCOPE OF WORK.
 - 4. DO NOT PARK ON OR WITHIN SIX (6) FEET OF RAILROAD TRACKS.
 - 5. COORDINATE WITH OWNER’S REPRESENTATIVE FOR PROTECTION WHEN WORKING ON OR WITHIN SIX (6) FEET OF RAILROAD TRACKS.
 - 6. CORDON OFF INTERIOR AND EXTERIOR AREAS BELOW WORK WHERE THERE IS RISK OF FALLING DEBRIS, TOOLS OR OTHER MATERIALS. COORDINATE CORDONING WITH OWNER’S REPRESENTATIVE.

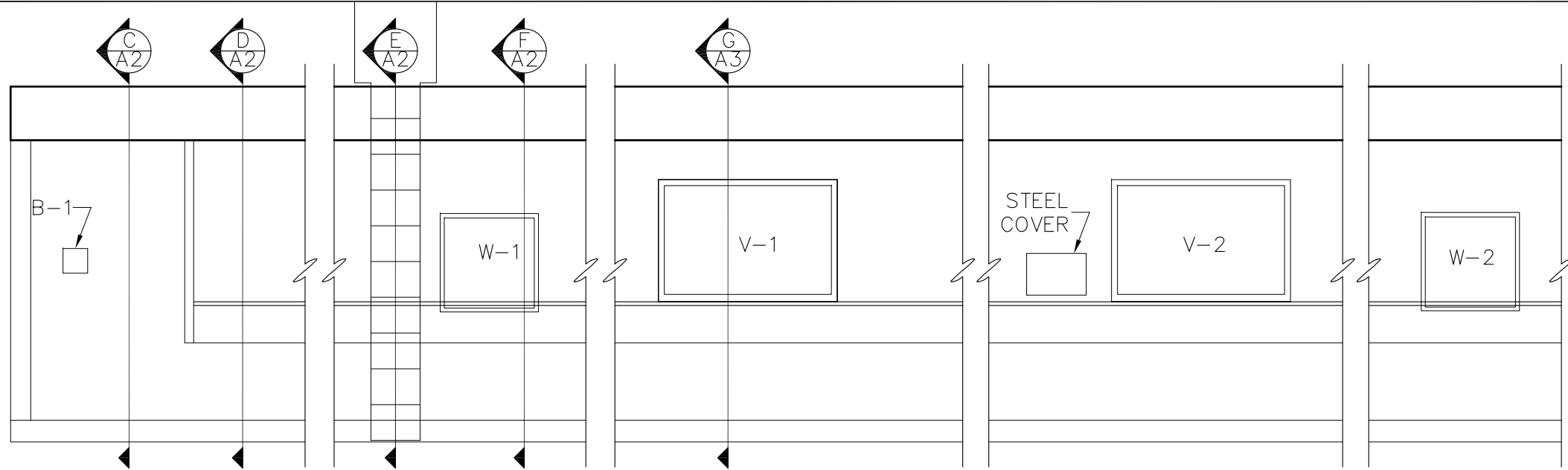
FASTENER SCHEDULE		
DESCRIPTION OF CONNECTION	FASTENER, QUANTITY AND SIZE	FASTENER, SPACING
TOP AND BOTTOM TRACK TO WALL STUD	2 EACH, #8 SCREWS	EACH END OF STUD, ONE PER FLANGE
FOUR (4) INCH WALL PANELS TOP AND BOTTOM TRACK TO BUILDING STEEL.	POWDER-ACTUATED (SHANK: 0.145”, HEAD DIAMETER: 0.3”) OR #10-16 HWH SCREWS (DIAMETER: 0.190”)	8 INCHES ON CENTER
FOUR (4) INCH WALL PANEL TOP TRACK TO BOTTOM TRACK 2½ WALL PANEL.	#8 SCREWS	12 INCHES ON CENTER STAGGERED
WALL SHEATHING TO WALL FRAMING	#8 SCREWS, SCREWS SECURING PLYWOOD SHALL BE SIMPSON PPSD OR EQUAL.	6 INCHES ON CENTER AT PERIMETER OF SHEATHING SHEET AND 12 INCHES ON CENTER TO INTERMEDIATE STUDS
FURRING STRIPS TO WALL PANEL	#8 SCREWS	12 INCHES ON CENTER
DUCT TO FOUR (4) INCH WALL PANEL	#8 SCREWS	8 INCHES ON CENTER FROM INTERIOR OF DUCT TO FRAMING, FULL PERIMETER
LADDER BRACKETS TO WALL STUDS	½ INCH DIAMETER BOLTS, ASTM A307, GALVANIZED	⅝ INCH DIAMETER HOLES, STAGGERED, ¾ INCH EDGE DISTANCE TO CENTER OF HOLES
LADDER BRACKETS TO LADDER RAIL	½ INCH DIAMETER BOLTS, ASTM A307, GALVANIZED	⅝ INCH DIAMETER HOLES, CENTERED ON BRACKET AND RAIL
FASCIA RETURN TO FASCIA	#8 SCREWS OR ⅜ STAINLESS RIVETS	12 INCHES ON CENTER

REV.	DATE	BY	REVISION

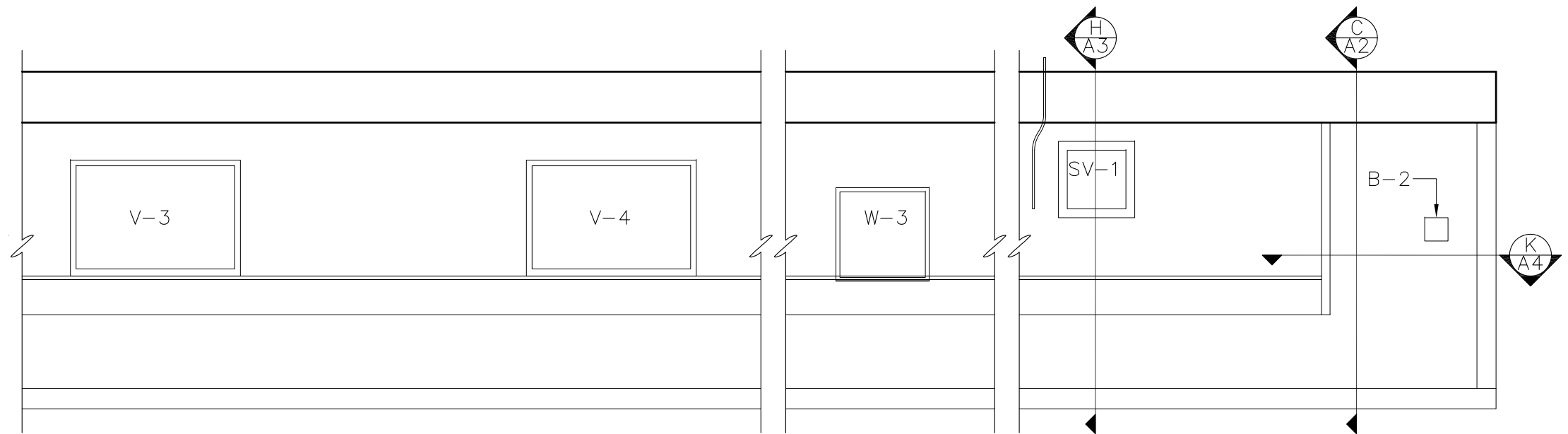
 ALASKA RAILROAD CORPORATION ENGINEERING SERVICES P.O. BOX 107500, ANCHORAGE, ALASKA 99510-7500			
PROJECT : ANCHORAGE DIESEL SHOP CLERESTORY WALL IMPROVEMENT			
TITLE: INSTRUCTION AND FASTENER SCHEDULE			
DESIGNED BY: ARRC	SCALE: AS NOTED		AFE NO.:
DRAWN BY: ARRC	DATE: JAN 2022		ACAD FILE:
CHECKED BY: ARRC	APPROVED BY: CDR		DWG NO. 2 OF 10

P:\Engineering\Buildings\MP 114 Anchorage\Bldg-26 Diesel Shop\2022 North Clerestory Improvements\2022 N Clerestory Wall.dwg

P:\Engineering\Buildings\MP 114 Anchorage\Bldg-26 Diesel Shop\2022 North Clerestory Improvements\2022 N Clerestory Wall.dwg



A EAST CLERESTORY WALL
SCALE: 1/4" = 1'-0"



B WEST CLERESTORY WALL
SCALE: 1/4" = 1'-0"

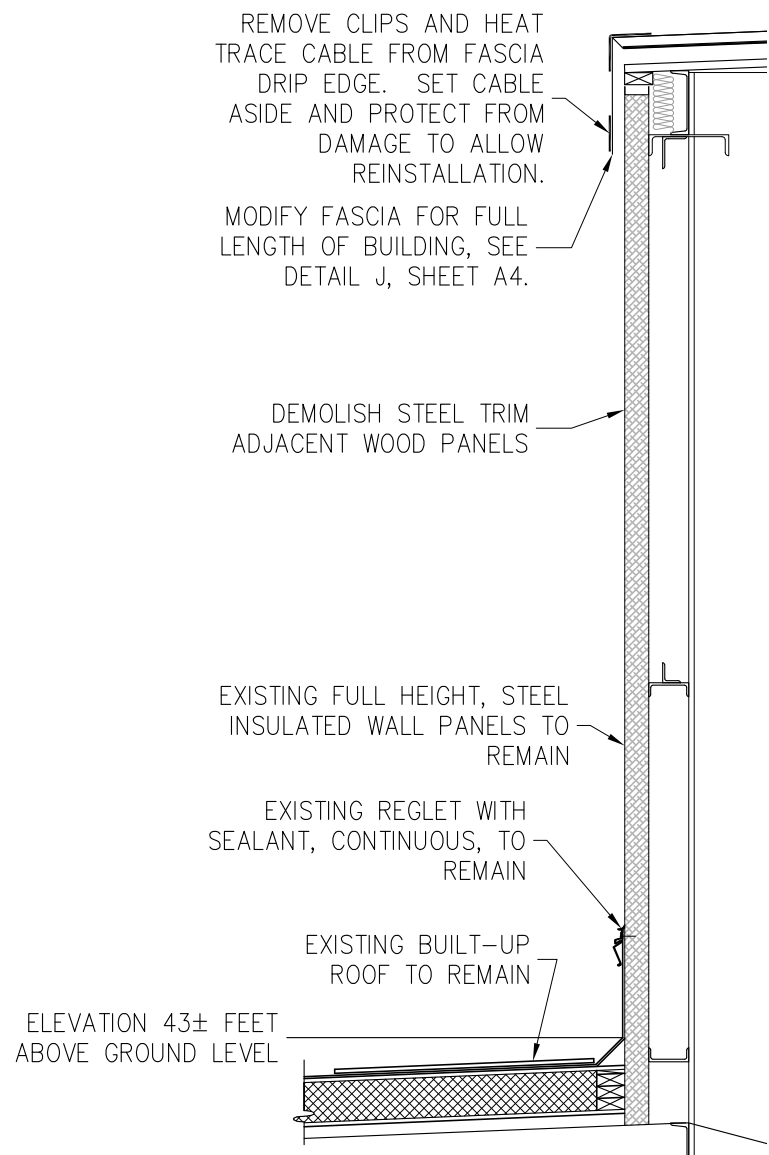
NOTES:

1. THERE IS APPROXIMATELY 53 FEET OF 1 INCH DIAMETER CONDUIT ATTACHED TO THE INTERIOR OF THE PLYWOOD PANELS, IN VICINITY OF V-3 AND V-4, THAT WILL NEED TO BE TEMPORARILY SUPPORTED AND THEN SECURED TO THE NEW PANEL FRAMING. EXISTING SUPPORTS MAY BE REUSED OR NEW ERICO CD2B HANGERS PROVIDED AND USED TO SUPPORT CONDUIT AT MAXIMUM OF 10 FEET ON CENTER.
2. THERE ARE CONDUIT (1/2 INCH DIAMETER) AND JUNCTION BOXES MOUNTED ON INTERIOR OF PLYWOOD PANELS, PROVIDING ELECTRIC POWER TO V-1, V-2, V-3, AND V-4, THAT WILL NEED TO BE TEMPORARILY SUPPORTED AND THEN SECURED TO THE NEW PANEL FRAMING. EXISTING SUPPORTS MAY BE REUSED OR NEW ERICO CDOB HANGERS PROVIDED AND USED TO SUPPORT CONDUIT AT MAXIMUM OF 10 FEET ON CENTER. J-BOXES MUST BE SECURED TO WALL.

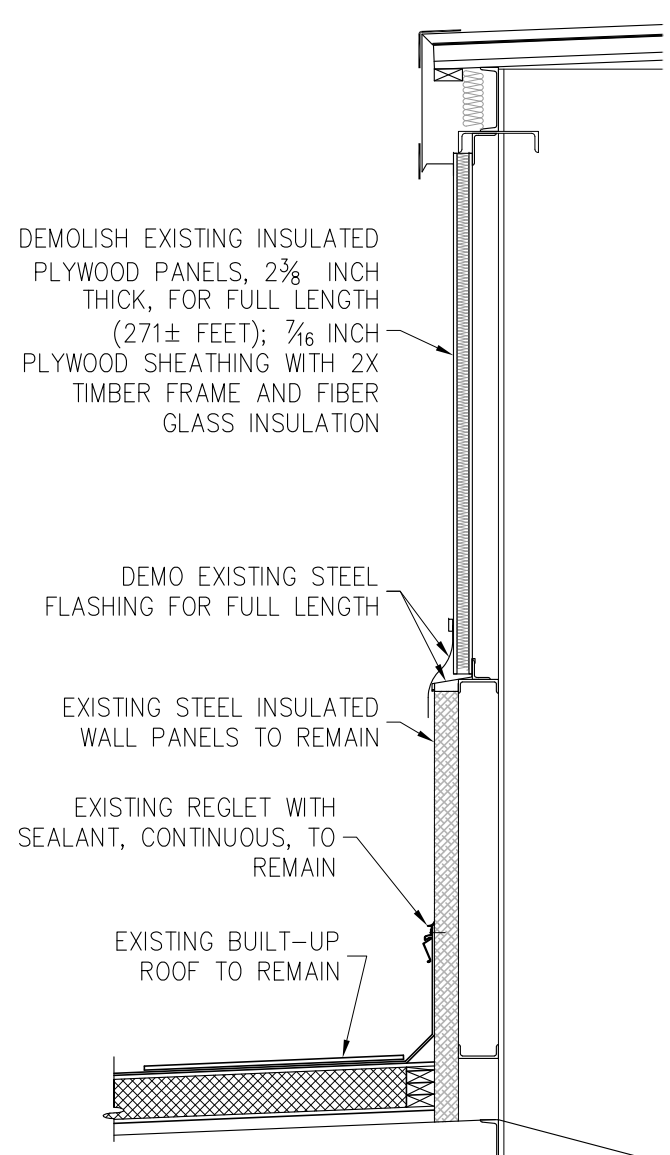
REV.	DATE	BY	REVISION

ALASKA RAILROAD CORPORATION ENGINEERING SERVICES P.O. BOX 107500, ANCHORAGE, ALASKA 99510-7500			
PROJECT: ANCHORAGE DIESEL SHOP CLERESTORY WALL IMPROVEMENTS			
TITLE: DEMOLITION ELEVATION			
DESIGNED BY: ARRC	SCALE: AS NOTED	A1	AFE NO.:
DRAWN BY: ARRC	DATE: JAN 2022		ACAD FILE:
CHECKED BY: ARRC	APPROVED BY: CDR		DWG NO. 3 OF 10

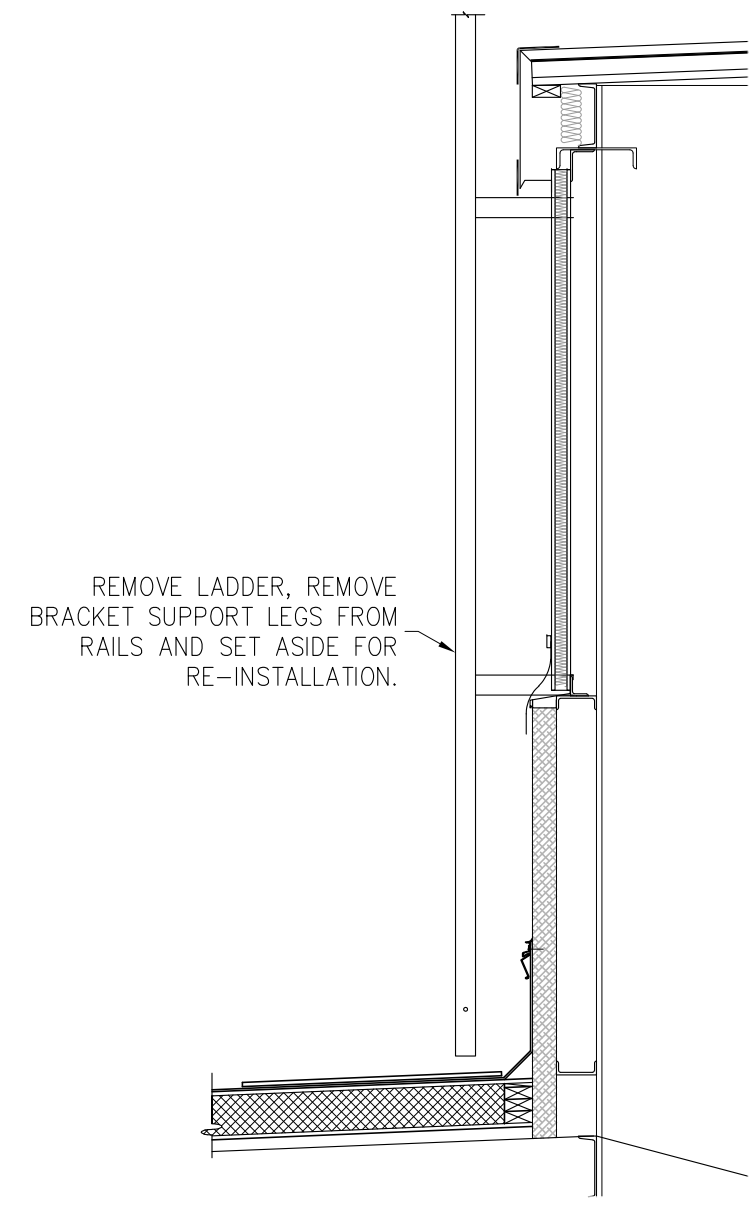
P:\Engineering\Buildings\MP 114 Anchorage\Bldg-26 Diesel Shop\2022 North Clerestory Improvements\2022 N Clerestory Wall.dwg



C
SECTION C
SCALE: 1/2" = 1'-0"




D
SECTION D
SCALE: 1/2" = 1'-0"



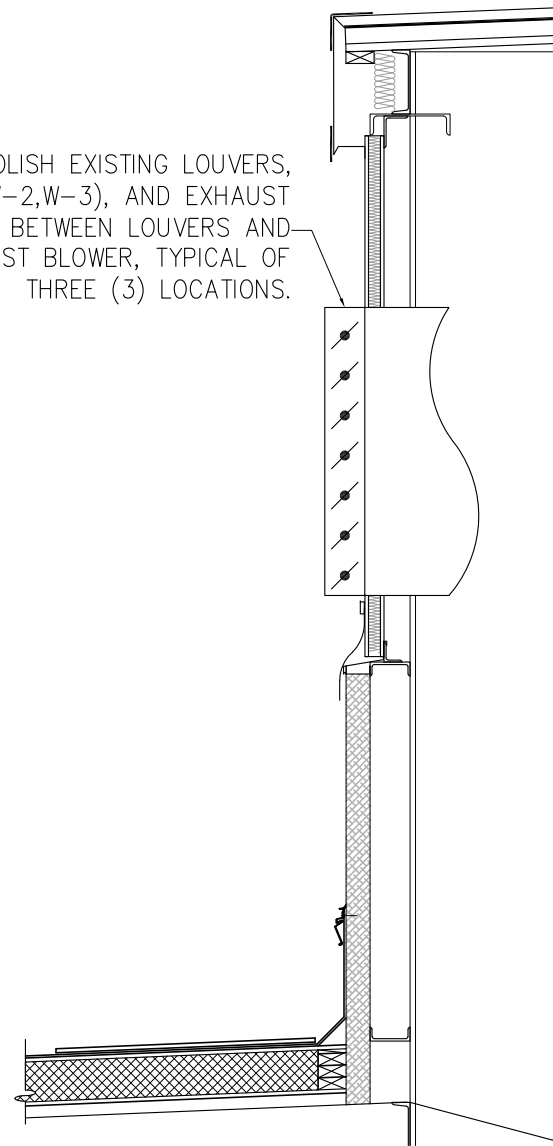
E
SECTION E
SCALE: 1/2" = 1'-0"

REV.	DATE	BY	REVISION

 ALASKA RAILROAD CORPORATION ENGINEERING SERVICES P.O. BOX 107500, ANCHORAGE, ALASKA 99510-7500			
PROJECT: ANCHORAGE DIESEL SHOP CLERESTORY WALL IMPROVEMENTS			
TITLE: DEMOLITION SECTION DETAILS			
DESIGNED BY: ARRC	SCALE: AS NOTED	A2	AFE NO.:
DRAWN BY: ARRC	DATE: JAN 2022		ACAD FILE:
CHECKED BY: ARRC			DWG NO. 4 OF 10
APPROVED BY: CDR			

P:\Engineering\Buildings\MP 114 Anchorage\Bldg-26 Diesel Shop\2022 North Clerestory Improvements\2022 N Clerestory Wall.dwg

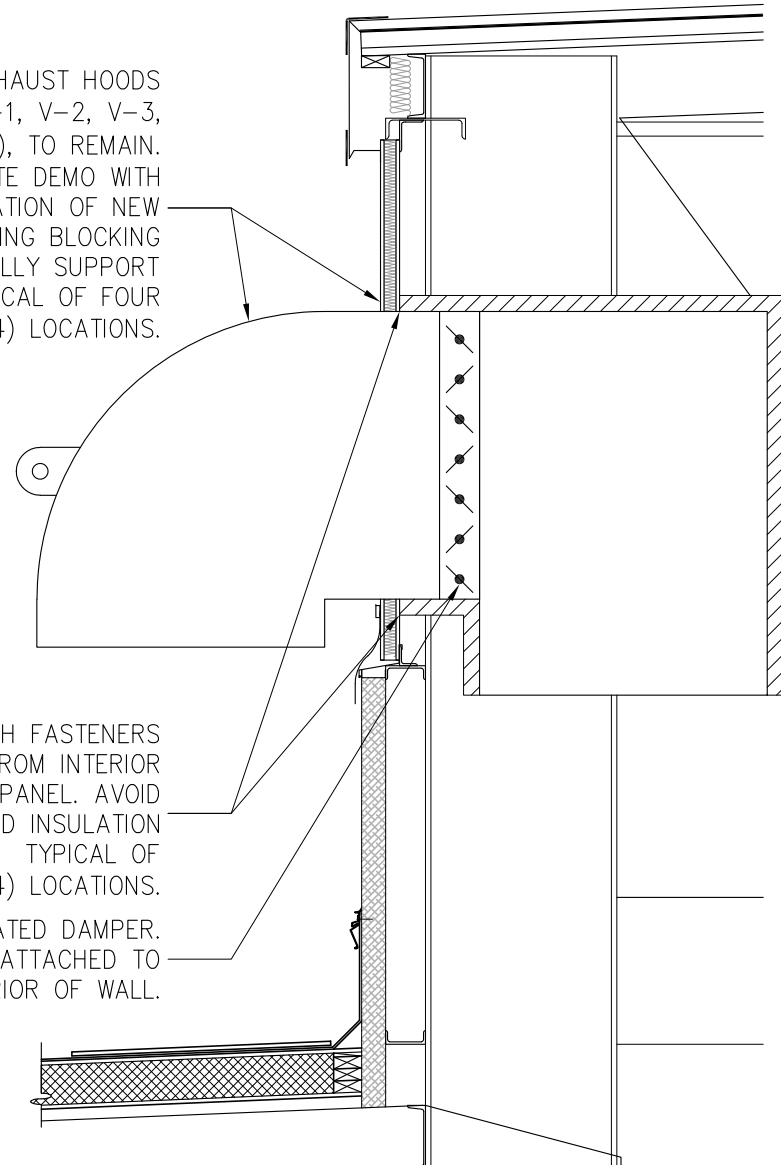
DEMOLISH EXISTING LOUVERS, (W-1,W-2,W-3), AND EXHAUST DUCT BETWEEN LOUVERS AND EXHAUST BLOWER, TYPICAL OF THREE (3) LOCATIONS.



F SECTION F
A3 SCALE: 1/2" = 1'-0"

EXISTING EXHAUST HOODS 36x56, (V-1, V-2, V-3, V-4), TO REMAIN. COORDINATE DEMO WITH INSTALLATION OF NEW FRAMING USING BLOCKING TO TEMPORALLY SUPPORT DUCTS. TYPICAL OF FOUR (4) LOCATIONS.

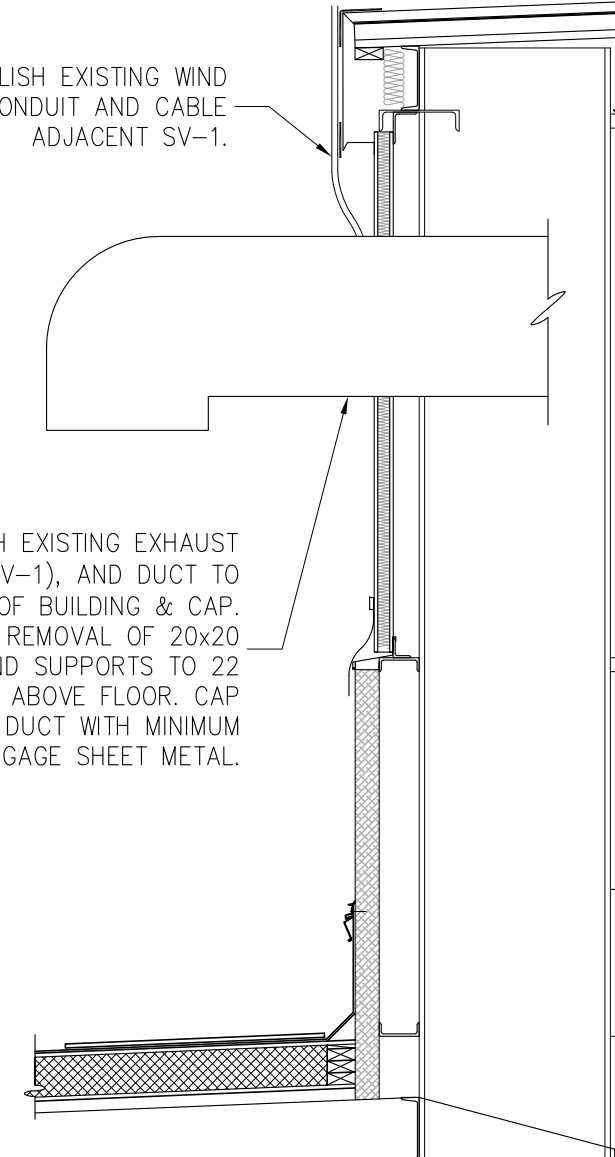
CUT FLUSH FASTENERS ATTACHED FROM INTERIOR ANGLE TO WALL PANEL. AVOID DAMAGING RIGID INSULATION AND JACKET. TYPICAL OF FOUR (4) LOCATIONS. MOTOR OPERATED DAMPER. CONDUIT ATTACHED TO INTERIOR OF WALL.



G SECTION G
A3 SCALE: 1/2" = 1'-0"


DEMOLISH EXISTING WIND SENSOR, CONDUIT AND CABLE ADJACENT SV-1.

DEMOLISH EXISTING EXHAUST HOOD (SV-1), AND DUCT TO INTERIOR OF BUILDING & CAP. INCLUDES REMOVAL OF 20x20 DUCT AND SUPPORTS TO 22 FEET ABOVE FLOOR. CAP REMAINING DUCT WITH MINIMUM 29 GAGE SHEET METAL.

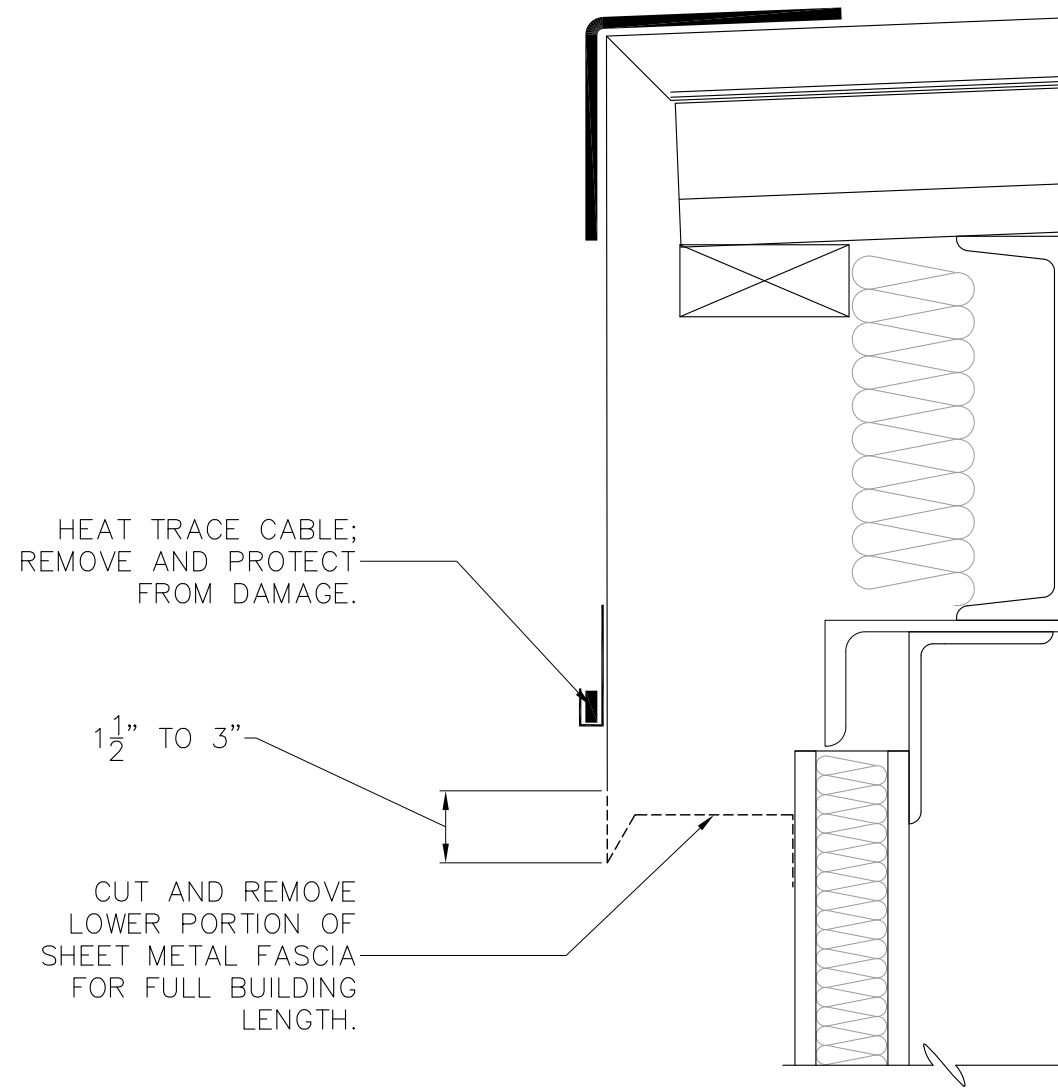


H SECTION H
A3 SCALE: 1/2" = 1'-0"

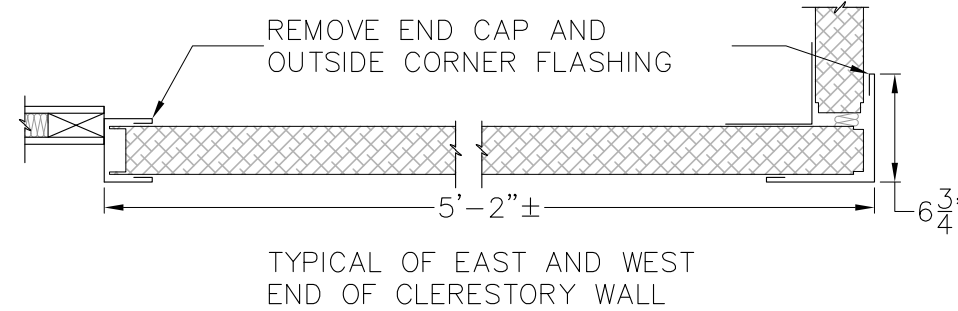
REV.	DATE	BY	REVISION

 ALASKA RAILROAD CORPORATION ENGINEERING SERVICES P.O. BOX 107500, ANCHORAGE, ALASKA 99510-7500			
ANCHORAGE DIESEL SHOP CLERESTORY WALL IMPROVEMENTS			
DEMOLITION SECTION DETAILS			
DESIGNED BY: ARRC	SCALE: AS NOTED	A3	AFE NO.:
DRAWN BY: ARRC	DATE: JAN 2022		ACAD FILE:
CHECKED BY: ARRC			DWG NO. 5 OF 10
APPROVED BY: CDR			

P:\Engineering\Buildings\MP 114 Anchorage\Bldg-26 Diesel Shop\2022 North Clerestory Improvements\2022 N Clerestory Wall.dwg




DETAIL J
SCALE: 3" = 1'-0"

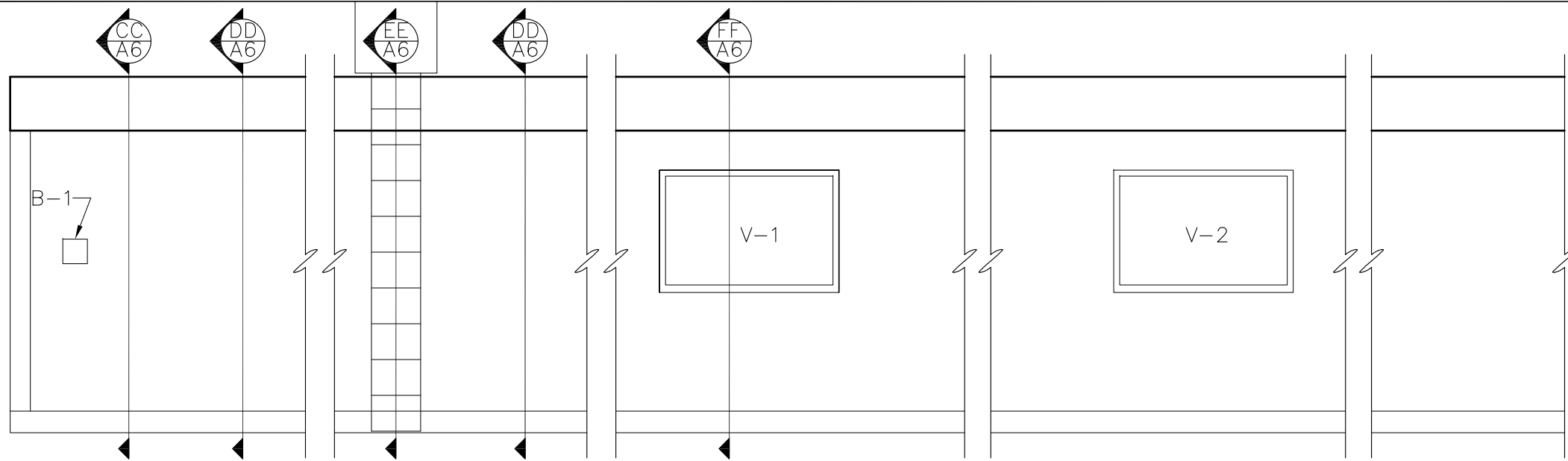


WALL ENDS SECTION DETAIL K
NO SCALE

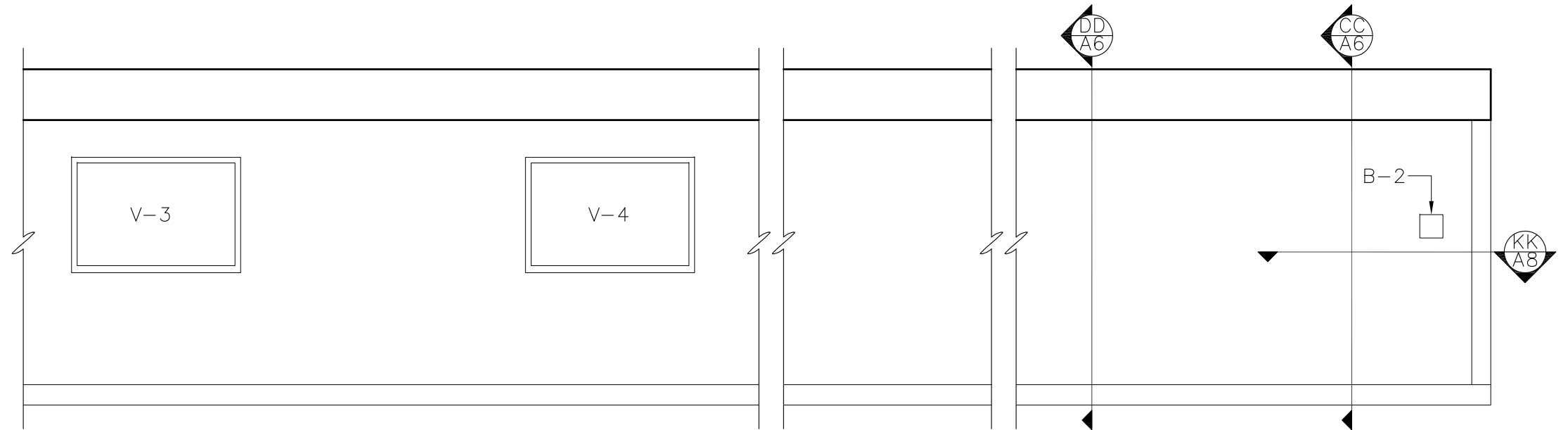
REV.	DATE	BY	REVISION

 ALASKA RAILROAD CORPORATION ENGINEERING SERVICES P.O. BOX 107500, ANCHORAGE, ALASKA 99510-7500			
PROJECT: ANCHORAGE DIESEL SHOP CLERESTORY WALL IMPROVEMENTS			
TITLE: DEMOLITION SECTION DETAILS			
DESIGNED BY: ARRC	SCALE: AS NOTED	A4	AFE NO.:
DRAWN BY: ARRC	DATE: JAN 2022		ACAD FILE:
CHECKED BY: ARRC			DWG NO. 6 OF 10
APPROVED BY: CDR			

P:\Engineering\Buildings\MP 114 Anchorage\Bldg-26 Diesel Shop\2022 North Clerestory Improvements\2022 N Clerestory Wall.dwg




AA EAST CLERESTORY WALL
 A5 SCALE: 1/4" = 1'-0"

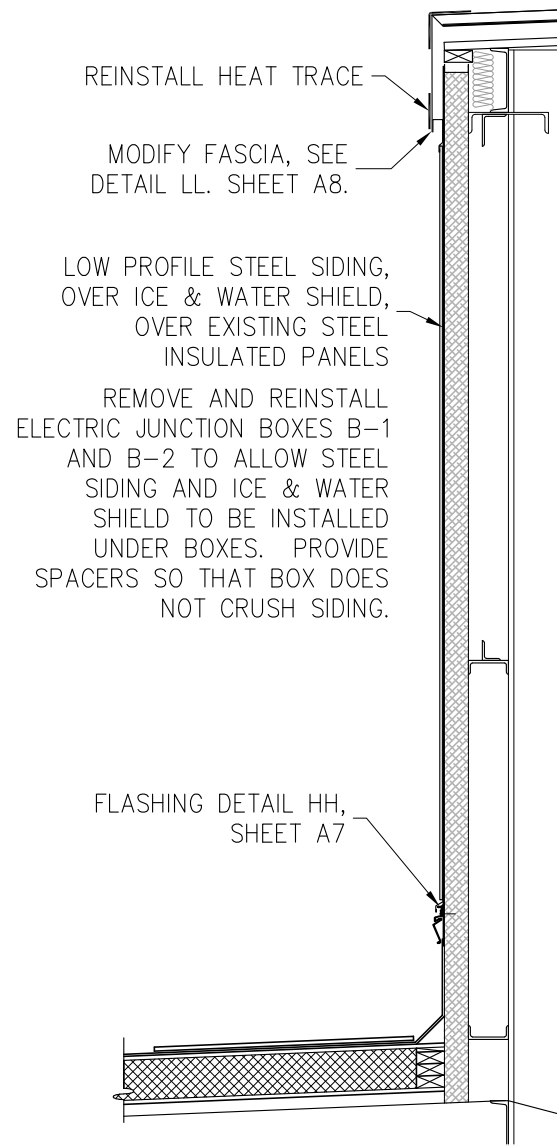


BB WEST CLERESTORY WALL
 A5 SCALE: 1/4" = 1'-0"

REV.	DATE	BY	REVISION

 ALASKA RAILROAD CORPORATION ENGINEERING SERVICES P.O. BOX 107500, ANCHORAGE, ALASKA 99510-7500			
PROJECT: ANCHORAGE DIESEL SHOP CLERESTORY WALL IMPROVEMENTS			
TITLE: IMPROVEMENTS ELEVATION			
DESIGNED BY: ARRC	SCALE: AS NOTED	A5	AFE NO.:
DRAWN BY: ARRC	DATE: JAN 2022		ACAD FILE:
CHECKED BY: ARRC			DWG NO. 7 OF 10
APPROVED BY: CDR			

P:\Engineering\Buildings\MP 114 Anchorage\Bldg-26 Diesel Shop\2022 North Clerestory Improvements\2022 N Clerestory Wall.dwg



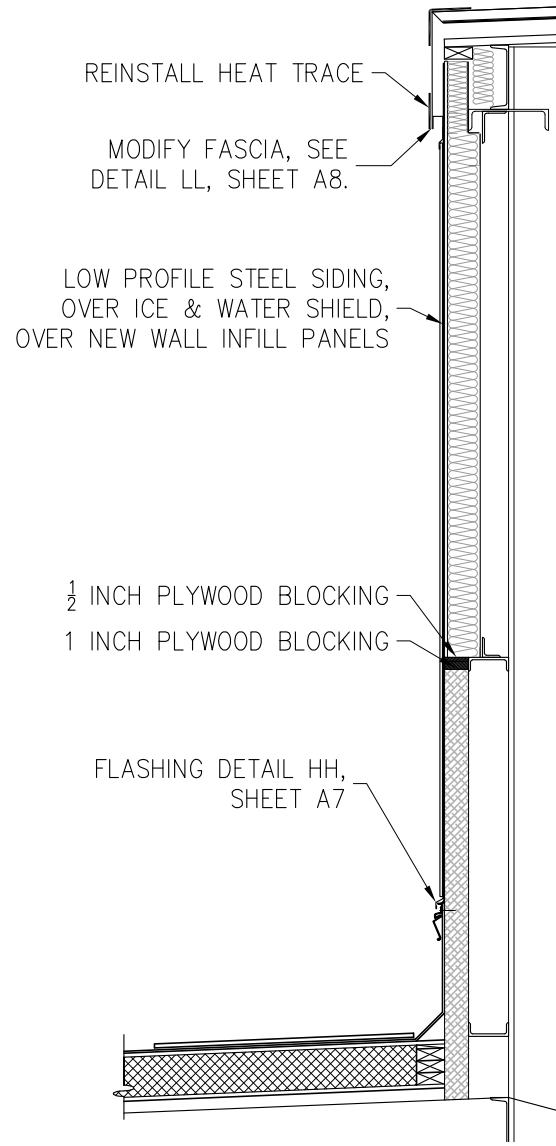
REINSTALL HEAT TRACE
 MODIFY FASCIA, SEE
 DETAIL LL, SHEET A8.

LOW PROFILE STEEL SIDING,
 OVER ICE & WATER SHIELD,
 OVER EXISTING STEEL
 INSULATED PANELS

REMOVE AND REINSTALL
 ELECTRIC JUNCTION BOXES B-1
 AND B-2 TO ALLOW STEEL
 SIDING AND ICE & WATER
 SHIELD TO BE INSTALLED
 UNDER BOXES. PROVIDE
 SPACERS SO THAT BOX DOES
 NOT CRUSH SIDING.

FLASHING DETAIL HH,
 SHEET A7

CC SECTION CC
 A6 SCALE: 1/2" = 1'-0"



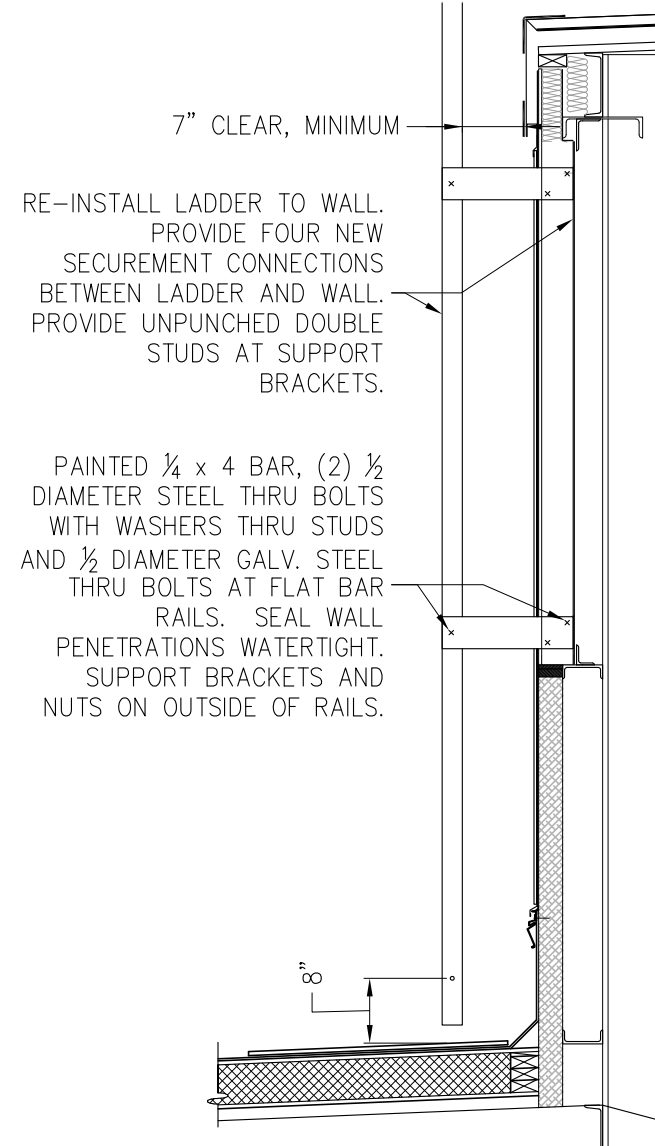
REINSTALL HEAT TRACE
 MODIFY FASCIA, SEE
 DETAIL LL, SHEET A8.

LOW PROFILE STEEL SIDING,
 OVER ICE & WATER SHIELD,
 OVER NEW WALL INFILL PANELS

1/2 INCH PLYWOOD BLOCKING
 1 INCH PLYWOOD BLOCKING

FLASHING DETAIL HH,
 SHEET A7

DD SECTION DD
 A6 SCALE: 1/2" = 1'-0"



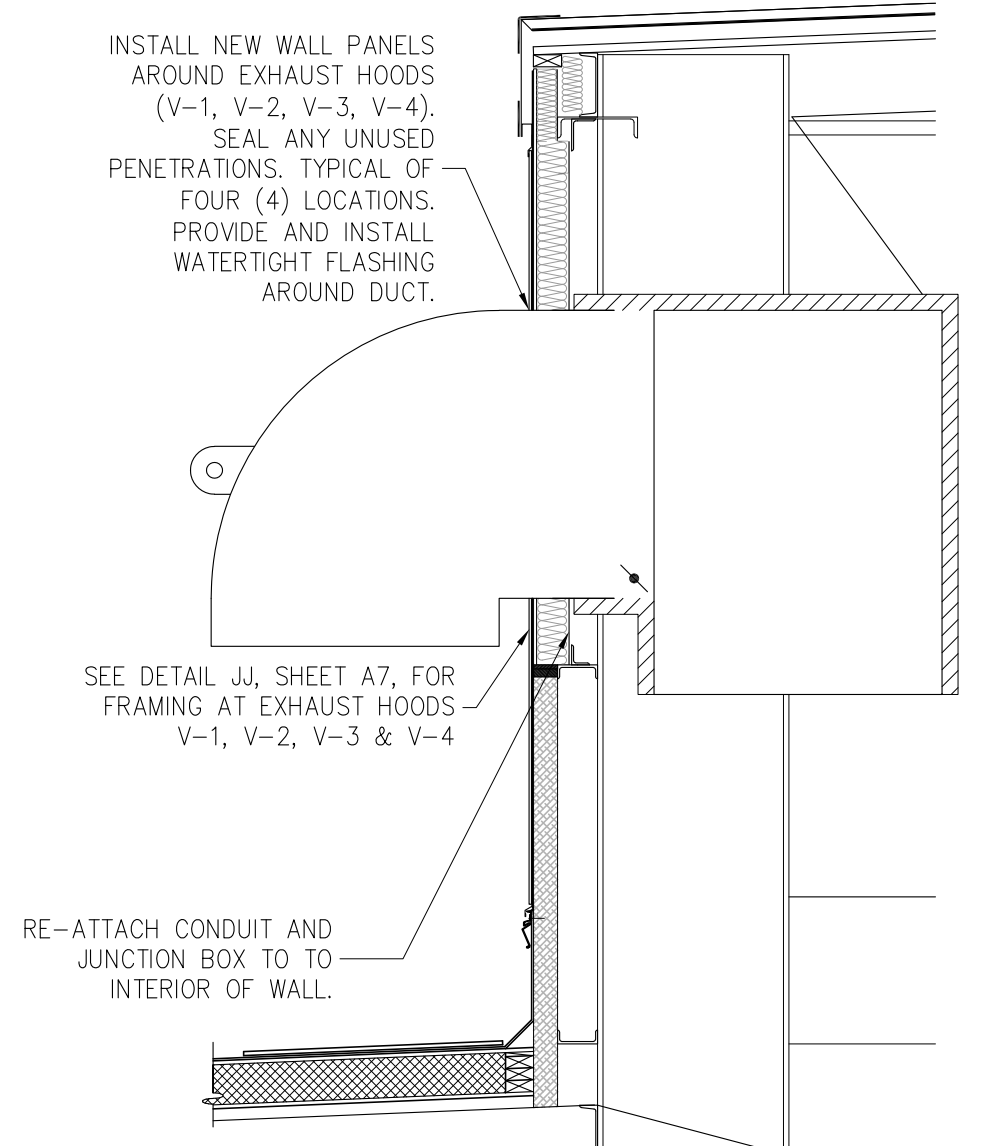
7" CLEAR, MINIMUM

RE-INSTALL LADDER TO WALL.
 PROVIDE FOUR NEW
 SECUREMENT CONNECTIONS
 BETWEEN LADDER AND WALL.
 PROVIDE UNPUNCHED DOUBLE
 STUDS AT SUPPORT
 BRACKETS.

PAINTED 1/4 x 4 BAR, (2) 1/2
 DIAMETER STEEL THRU BOLTS
 WITH WASHERS THRU STUDS
 AND 1/2 DIAMETER GALV. STEEL
 THRU BOLTS AT FLAT BAR
 RAILS. SEAL WALL
 PENETRATIONS WATERTIGHT.
 SUPPORT BRACKETS AND
 NUTS ON OUTSIDE OF RAILS.

8"

EE SECTION EE
 A6 SCALE: 1/2" = 1'-0"



INSTALL NEW WALL PANELS
 AROUND EXHAUST HOODS
 (V-1, V-2, V-3, V-4).
 SEAL ANY UNUSED
 PENETRATIONS. TYPICAL OF
 FOUR (4) LOCATIONS.
 PROVIDE AND INSTALL
 WATERTIGHT FLASHING
 AROUND DUCT.

SEE DETAIL JJ, SHEET A7, FOR
 FRAMING AT EXHAUST HOODS
 V-1, V-2, V-3 & V-4

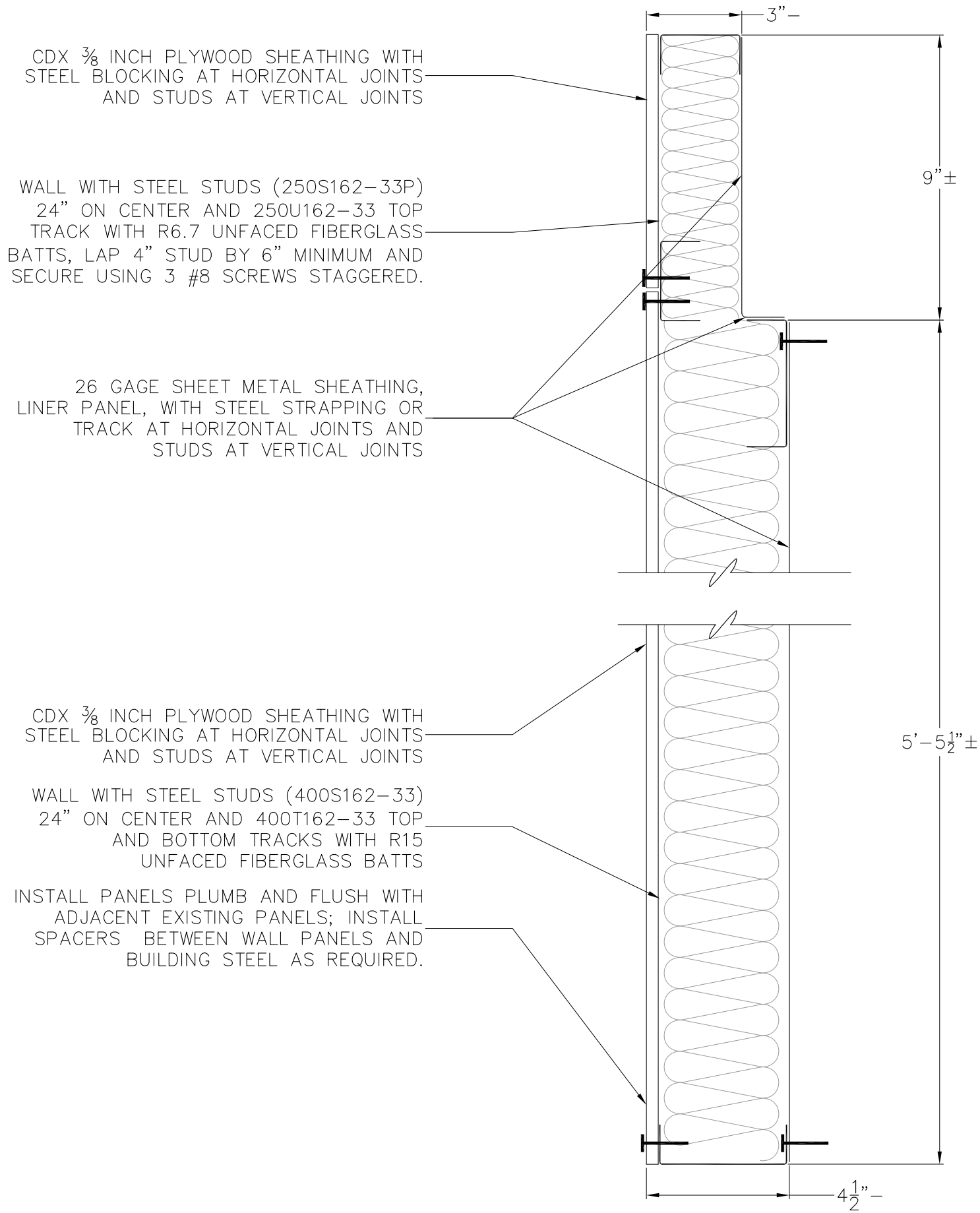
RE-ATTACH CONDUIT AND
 JUNCTION BOX TO TO
 INTERIOR OF WALL.

FF SECTION FF
 A6 SCALE: 1/2" = 1'-0"

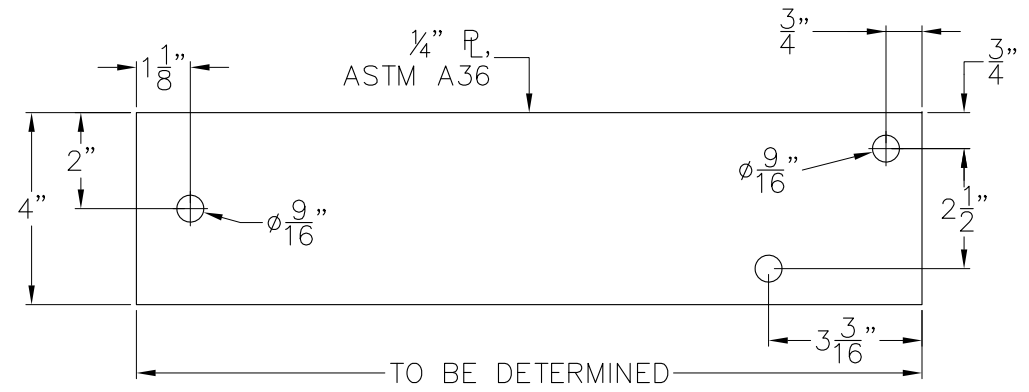
REV.	DATE	BY	REVISION

ALASKA RAILROAD CORPORATION ENGINEERING SERVICES P.O. BOX 107500, ANCHORAGE, ALASKA 99510-7500			
PROJECT: ANCHORAGE DIESEL SHOP CLERESTORY WALL IMPROVEMENTS			
TITLE: IMPROVEMENTS SECTION DETAILS			
DESIGNED BY: ARRC	SCALE: AS NOTED	A6	AFE NO.:
DRAWN BY: ARRC	DATE: JAN 2022		ACAD FILE:
CHECKED BY: ARRC			DWG NO. 8 OF 10
APPROVED BY: CDR			

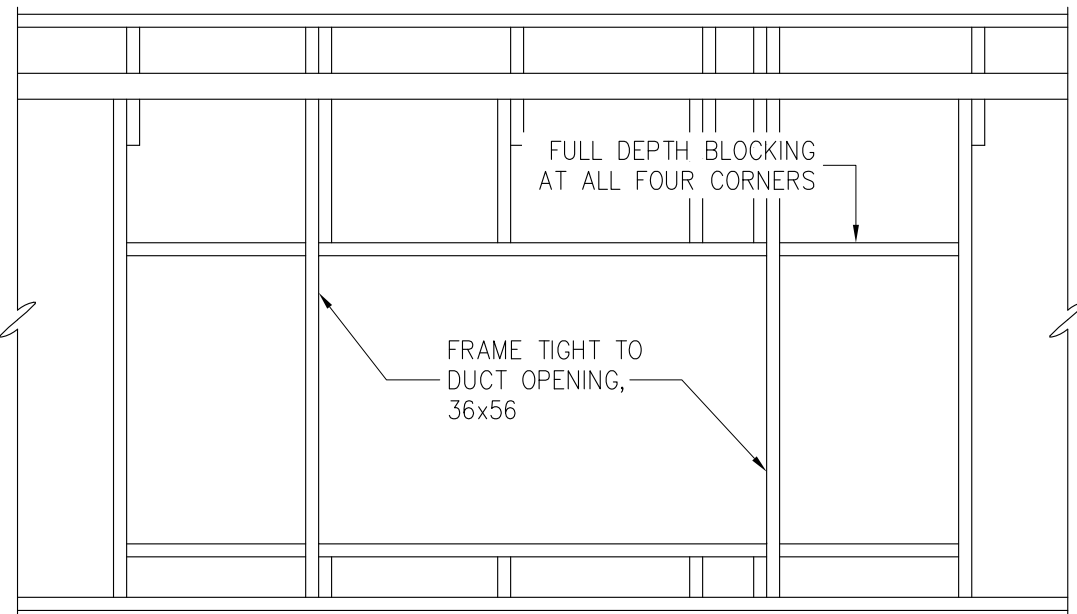
P:\Engineering\Buildings\MP 114 Anchorage\Bldg-26 Diesel Shop\2022 North Clerestory Improvements\2022 N Clerestory Wall.dwg



GG WALL INFILL DETAIL GG
A7 NO SCALE



JJ LADDER SUPPORT BRACKET
A7 NO SCALE

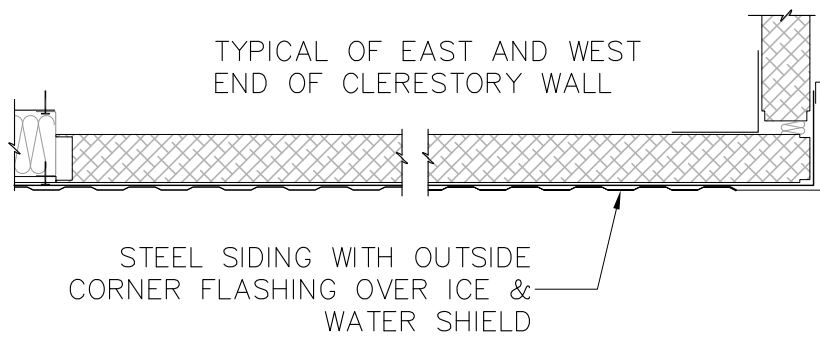


HH DUCT FRAMING ELEVATION
A7 NO SCALE

REV.	DATE	BY	REVISION

ALASKA RAILROAD CORPORATION ENGINEERING SERVICES P.O. BOX 107500, ANCHORAGE, ALASKA 99510-7500	
PROJECT: ANCHORAGE DIESEL SHOP CLERESTORY WALL IMPROVEMENTS	
TITLE: IMPROVEMENTS SECTION DETAILS	
DESIGNED BY: ARRC DRAWN BY: ARRC CHECKED BY: ARRC APPROVED BY: CDR	SCALE: AS NOTED DATE: JAN 2022
A7	AFE NO.: ACAD FILE: DWG NO. 9 OF 10

P:\Engineering\Buildings\MP 114 Anchorage\Bldg-26 Diesel Shop\2022 North Clerestory Improvements\2022 N Clerestory Wall.dwg

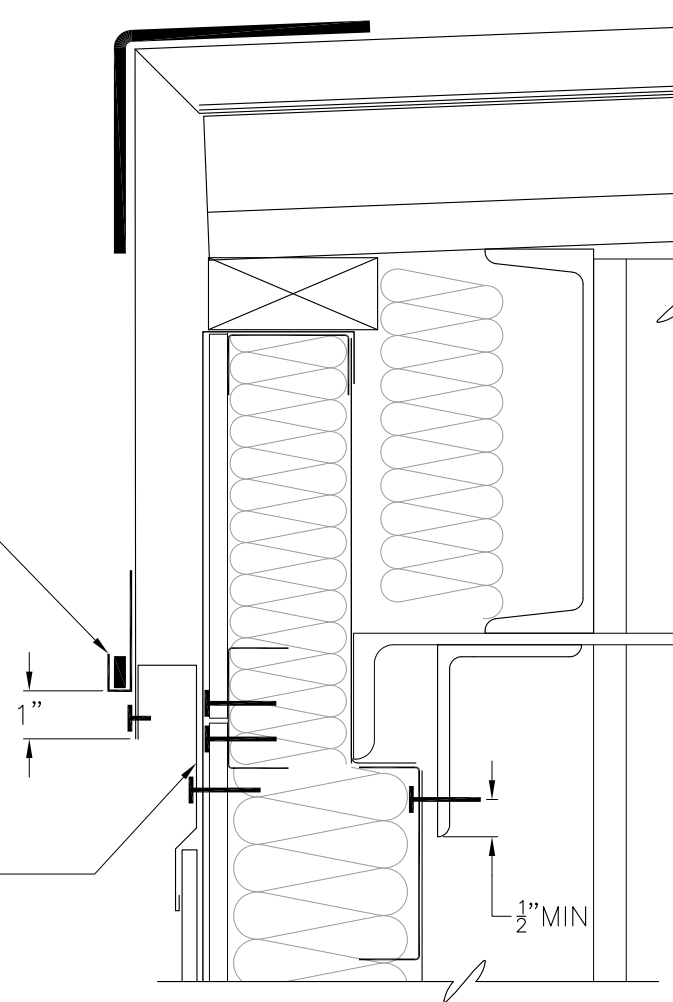


KK WALL END SECTION DETAIL
A8 NO SCALE

ADHERE RAYCHEM GMK-RC CLIPS TO FASCIA USING MANUFACTURER APPROVED SPEED BONDER OR PLEXUS ADHESIVE.

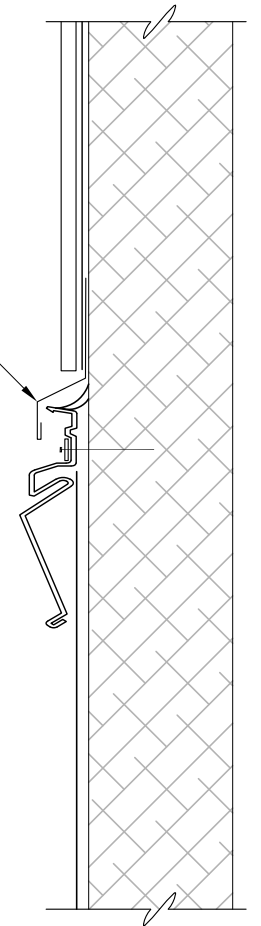
HEAT TRACE; INSTALL NEW RAYCHEM GMK-RC CLIPS AT 12 INCHES ON CENTER AND RELAY CABLE.

PROVIDE AND INSTALL NEW 24 GAUGE DRIP EDGE RETURN AND FLASHING OVER NEW SIDING FOR FULL LENGTH.

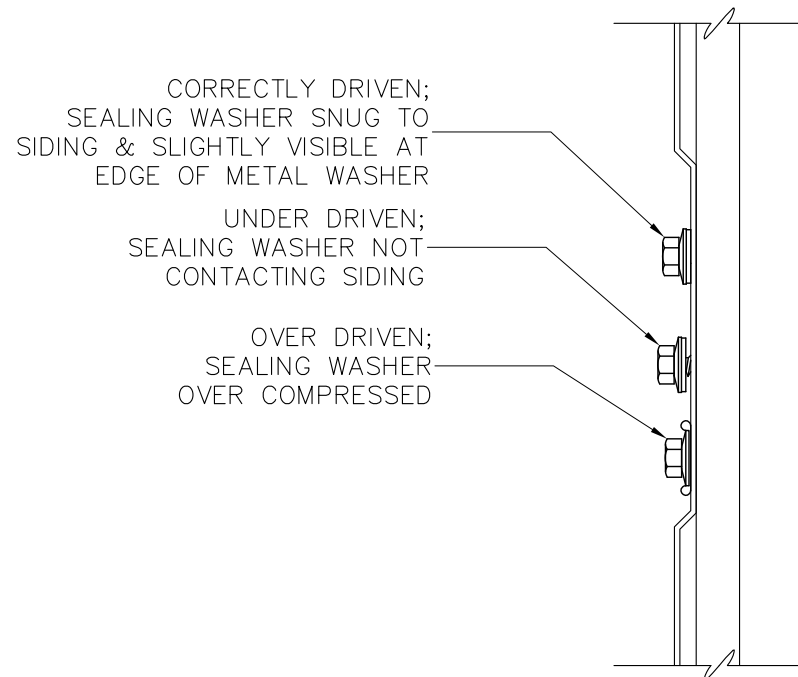


LL FASCIA SECTION DETAIL GG
A8 SCALE: 3" = 1'-0"

FLASHING UNDER ICE & WATER SHIELD AND OVER REGLET




NN SIDING BASE SECTION DETAIL
A8 NO SCALE



PP SIDING SECUREMENT DETAIL
A8 NO SCALE

REV.	DATE	BY	REVISION

 ALASKA RAILROAD CORPORATION ENGINEERING SERVICES P.O. BOX 107500, ANCHORAGE, ALASKA 99510-7500			
PROJECT: ANCHORAGE DIESEL SHOP CLERESTORY WALL IMPROVEMENTS			
TITLE: IMPROVEMENTS SECTION DETAILS			
DESIGNED BY: ARRC	SCALE: AS NOTED	A8	AFE NO.:
DRAWN BY: ARRC	DATE: JAN 2022		ACAD FILE:
CHECKED BY: ARRC			DWG NO. 10 OF 10
APPROVED BY: CDR			